

NEW COLLECTIONS 2024  
The Novelties

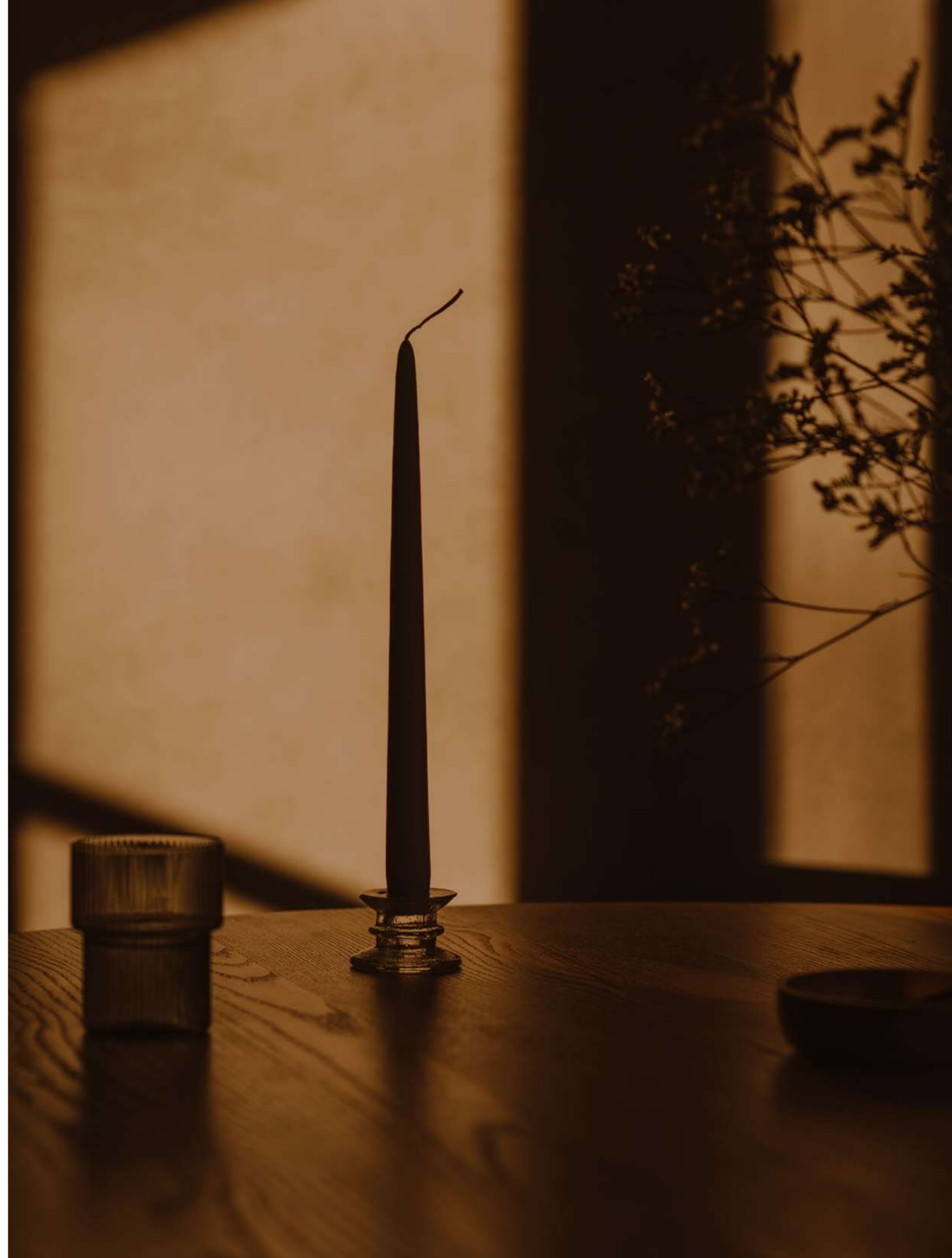


NEW COLLECTIONS 2024  
The Novelties



Marked by a refined and understated interior style, Boffi indoor and outdoor kitchens, bathrooms and interior systems create a visual experience with projects designed to become architectural statements. The models reinterpret tradition to offer versatile solutions capable of concealing shapes and functions or emphasising them with exclusive materials. The design takes on a new meaning in modern spaces, allowing fluid movement and a style consistent with the rest of the home that is reinforced by the unparalleled quality of Boffi. There are endless possibilities to create sophisticated, one-of-a-kind spaces with details that combine aesthetic finishes and top-tier functionality while moving away from inflexible style codes to focus on spacious comfort and performance.

Cove Kitchen	Indoor Kitchen	6
K14	Indoor Kitchen	16
Novanta	Indoor Kitchen	26
Salinas	Indoor Kitchen	38
XO	Indoor Kitchen	46
K6 Outdoor	Outdoor Kitchen	60
Minikitchen outdoor	Outdoor Kitchen	68
I Fiumi	Bathroom	74
Antibes	Walk-in Closet & Living System	88





BOFFI



The Migration of Shapes:  
COVE KITCHEN

INDOOR KITCHEN

DESIGN: ZAHA HADID

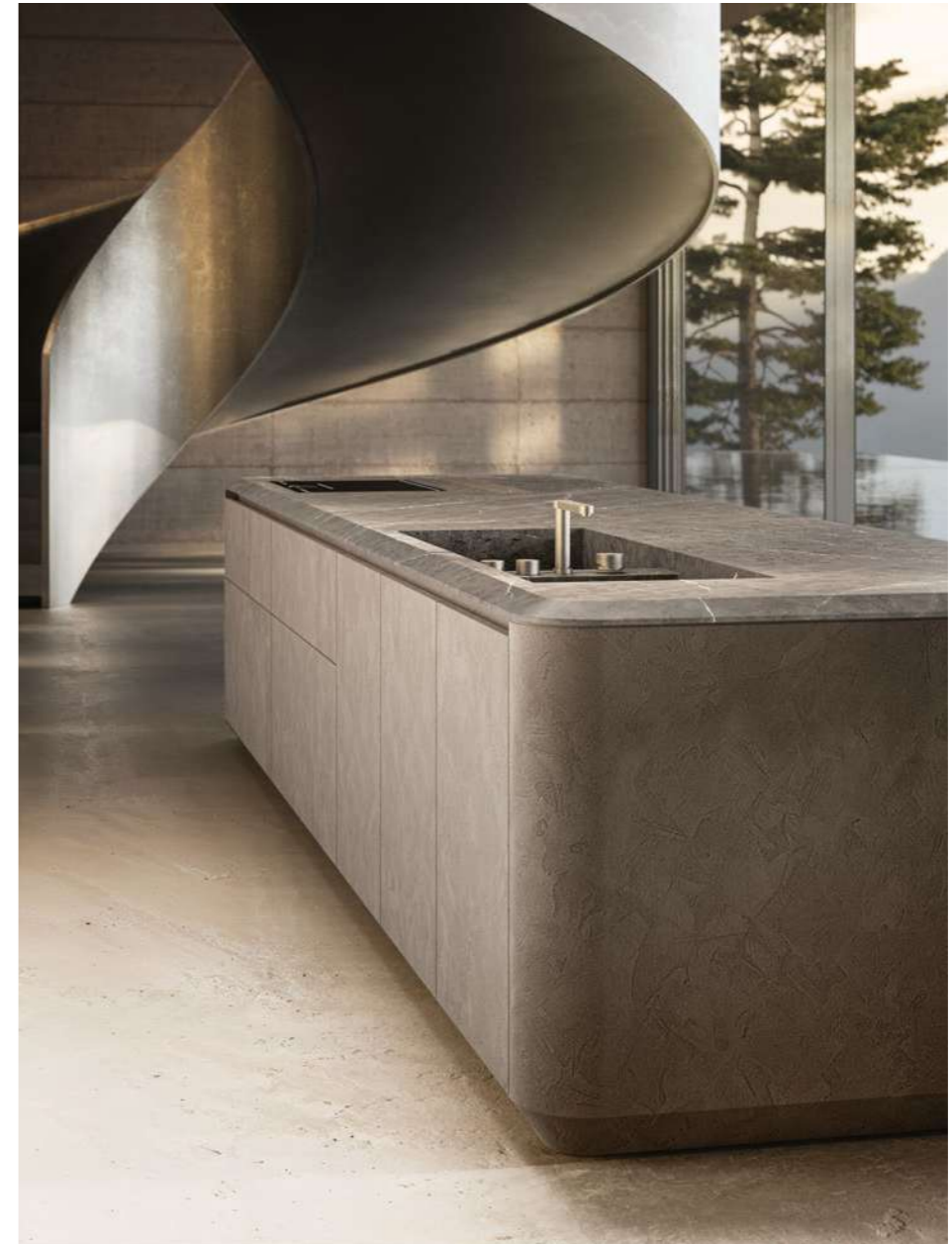
YEAR: (2017) 2024



THE MIGRATION OF SHAPES

The Cove Kitchen is a monobloc piece derived from sinuous and simple lines using malleable materials such as Corian®. Employing architectural rigor and a forward-thinking concept, the design comes from the pioneering mind of Zaha Hadid and sees the work island doubling as a place for entertaining. The distinctive shape now evolves for the 90th anniversary of Boffi by covering the kitchen island with two side panels with rounded corners and countertops with perimeter edges gently curved downwards.











BOFFI

Innovative Projections:  
K14

INDOOR KITCHEN

DESIGN: NORBERT WANGEN

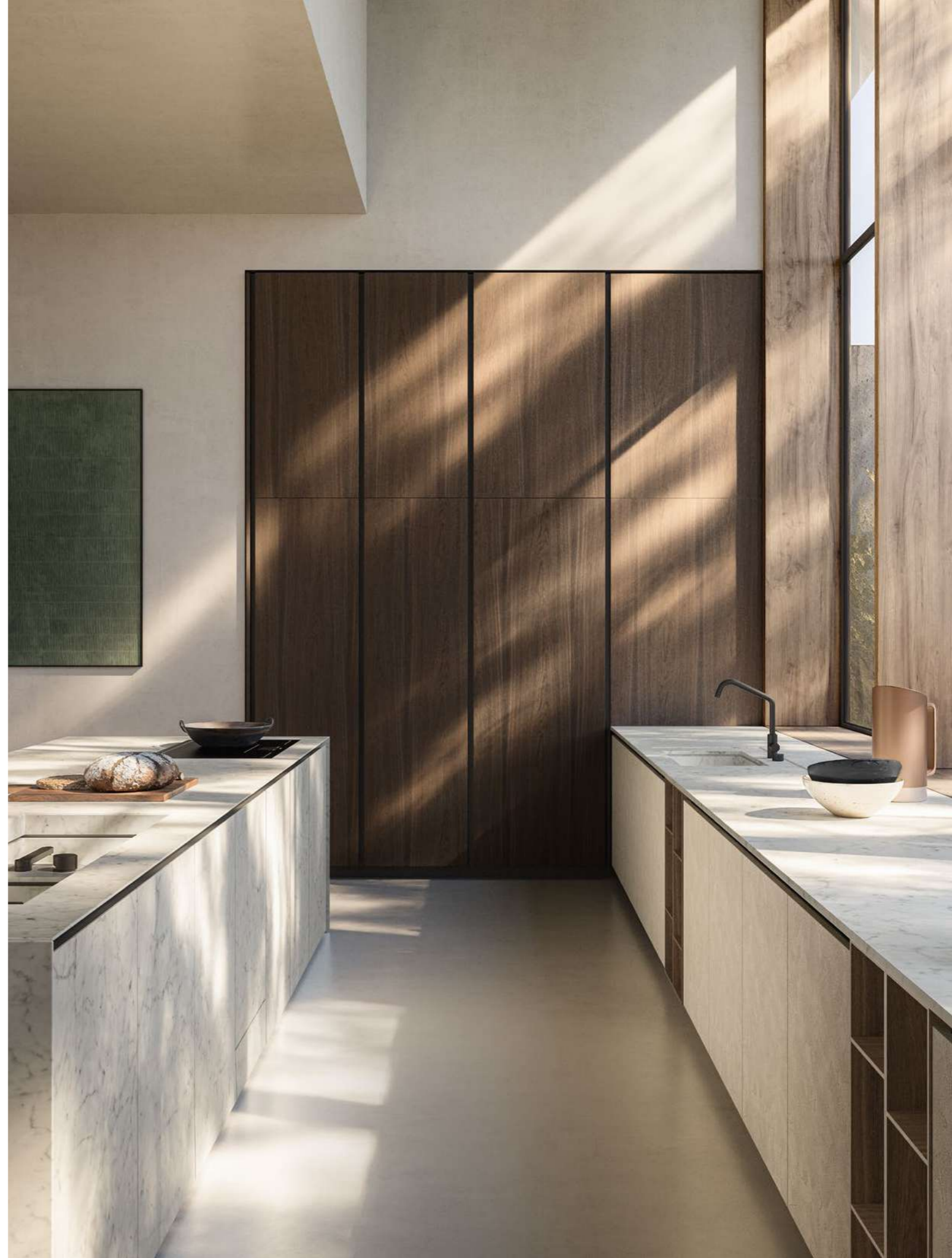
YEAR: (2007) 2024





## INNOVATIVE PROJECTIONS

K14 is a system of handle-free base units where the opening of the fronts and doors is accessed thanks to the 30° bevelled edge, the same detail seen on the countertop and which creates a sense of lightness. For 2024, the new K14 design features end panels that permit a functional snack area while underneath the seated area the marble extends down to sit just two centimetres off of the floor.

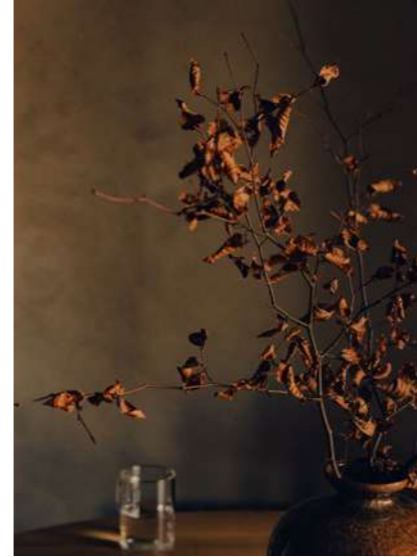








BOFFI



Birth of a New Icon:  
NOVANTA

INDOOR KITCHEN

DESIGN: PIERO LISSONI

YEAR: 2024

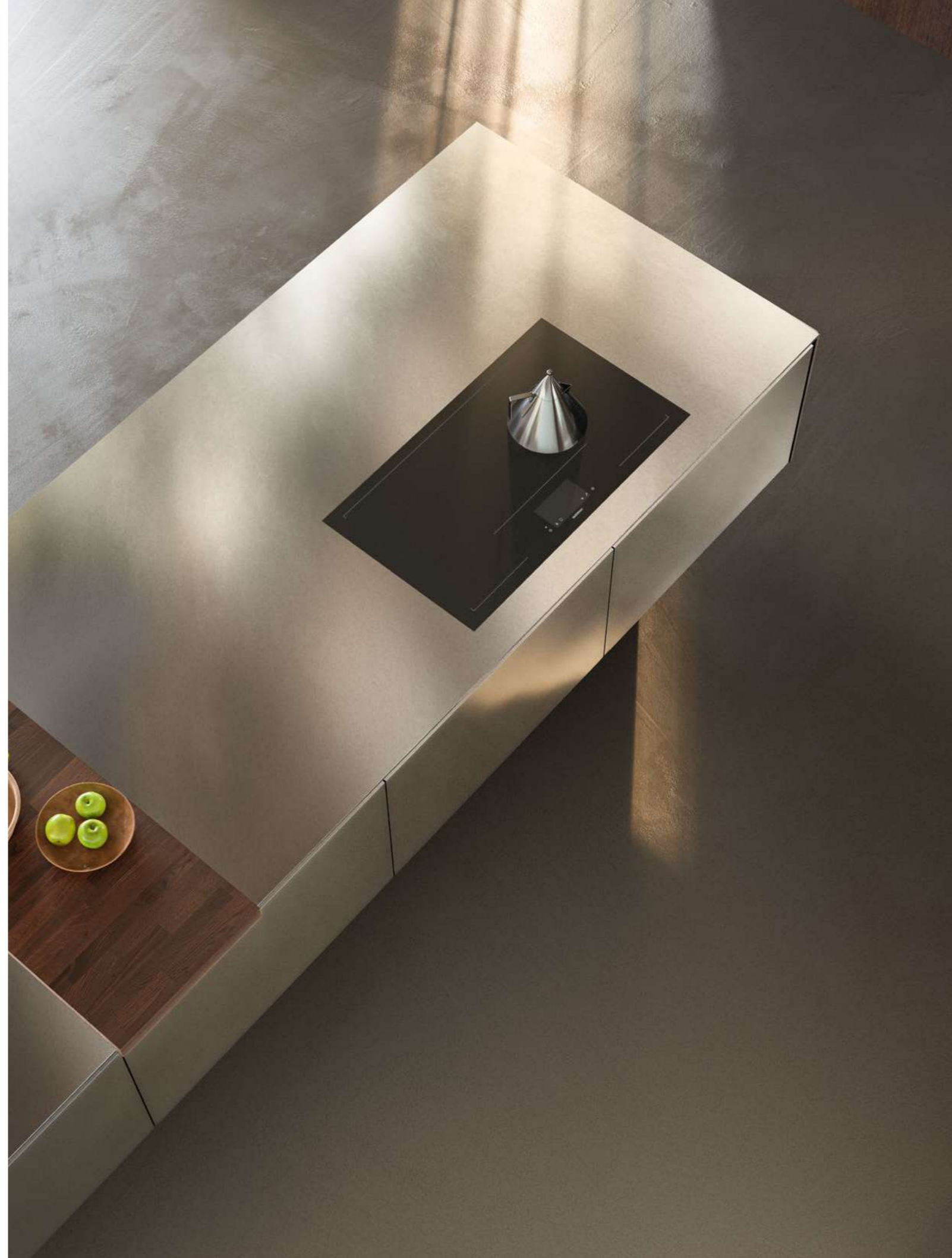




BIRTH OF A NEW ICON

To celebrate the 90th anniversary of Boffi, Piero Lissoni has designed the Novanta kitchen system. The recessed base creates the illusion that the sturdy unit, made in stainless steel with doors in solid wood, is floating above the floor. These two tactile components are the perfect example to show how the industrial design research of Boffi has led to new types of architectures and materials.











BOFFI

Material Inspirations:  
SALINAS

INDOOR KITCHEN

DESIGN: PATRICIA URQUIOLA

YEAR: 2014







## MATERIAL INSPIRATIONS

This system allows for a range of sophisticated options yet maintains its forceful and linear character. Salinas can be set up based on a composition emphasising a single material or colour or according to a combination of materials and colours for each of the different elements to create a truly custom-made project. A new finishing from the Boffi range, the 3D Striped in MDi, characterises the doors, while the sliding solid wood snack counter, with its new dimensions, is placed on the top and is equipped with a technical support to lighten its presence.







BOFFI

Revisiting a Classic:  
XO

INDOOR KITCHEN

DESIGN: ELISA OSSINO

YEAR: 2024





## REVISITING A CLASSIC

The new design from Elisa Ossino is a model inspired by the timeless Xila kitchen designed by Luigi Massoni in 1972. The kitchen taps into a creative theme from Ossino with geometries that combine precise lines with gentle borders. Top and side panels work like a tactile gate to frame the iconic handle-free doors that sit just two centimetres off the floor. The entertaining component is not overlooked as the kitchen features a solid wood snack table atop the marble work surface.













BOFFI



In Becomes Out:  
K6 OUTDOOR

OUTDOOR KITCHEN

DESIGN: NORBERT WANGEN

YEAR: 2024



IN BECOMES OUT

The K6 outdoor kitchen possesses all the requirements needed for use outside in an understated contemporary design that conceals a highly modern setup. Outfitted with a Corian® or stainless steel surface, the stand-alone single-unit creation from Norbert Wangen contains everything needed for food prep hidden inside a sliding countertop that when moved into a cantilevered position doubles as a dining area.









BOFFI



Thinking Outside the Box:  
MINIKITCHEN OUTDOOR

OUTDOOR KITCHEN

DESIGN: JOE COLOMBO + CRS BOFFI

YEAR: (2012) 2024

THINKING OUTSIDE THE BOX

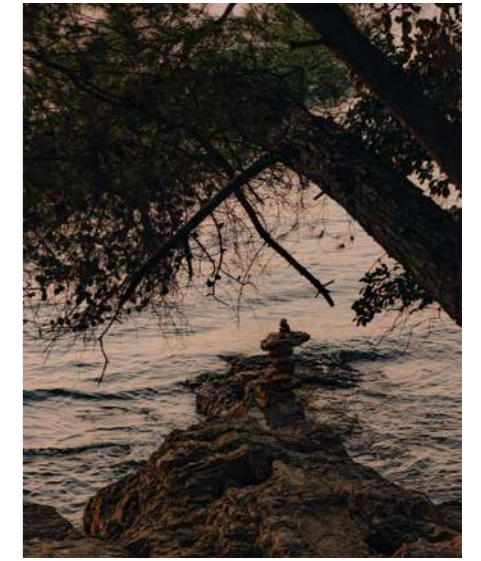
Designed by Joe Colombo in 1963, the compact Minikitchen on wheels is also available in a version for use outdoors in covered areas. The iconic half-cubic metre Made-in-Italy design features the necessary tools for cooking, food prep and storage. Thanks to dedicated research into materials, the self-supporting structure is made from a lightweight marine plywood resistant to moisture and sports a surface in Lasermat.







BOFFI



Elements and Atmospheres:  
I FIUMI

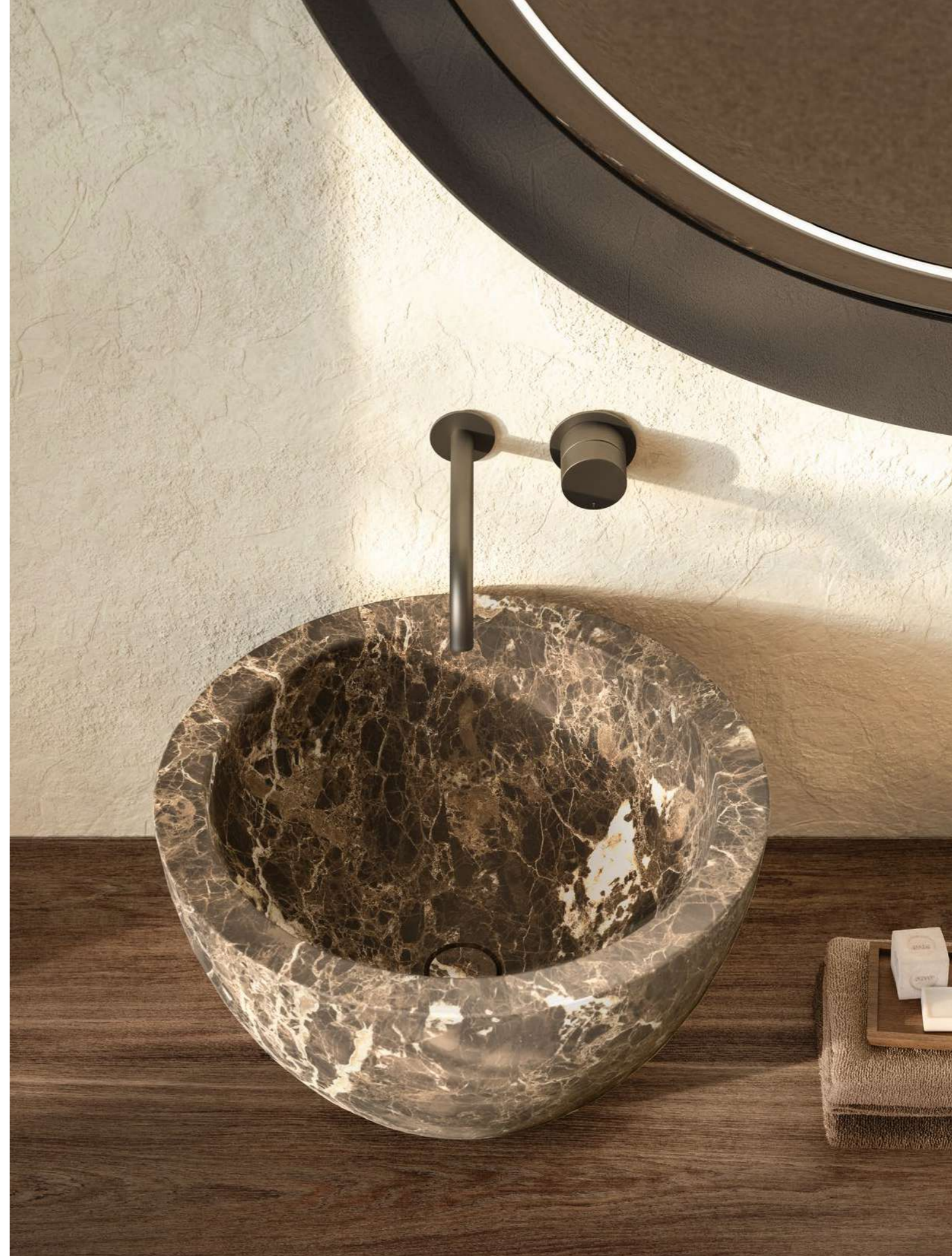
BATHROOM

DESIGN: CLAUDIO SILVESTRIN

YEAR: (1999) 2024

## ELEMENTS AND ATMOSPHERES

The re-edition of I Fiumi, a design by Claudio Silvestrin, is characterised by wall-mounted base units whose height allows one to save space in the bathroom without compromising on storage. The clean lines, without joints, remain together with the 45° bevelled edge. The 60-, 90- and 120-centimetre modules can be combined with the reposed Piave countertop washbasin. The new 2024 rendition introduces the monobloc version with a wooden column and Rubicone sink together with a precious mirror.

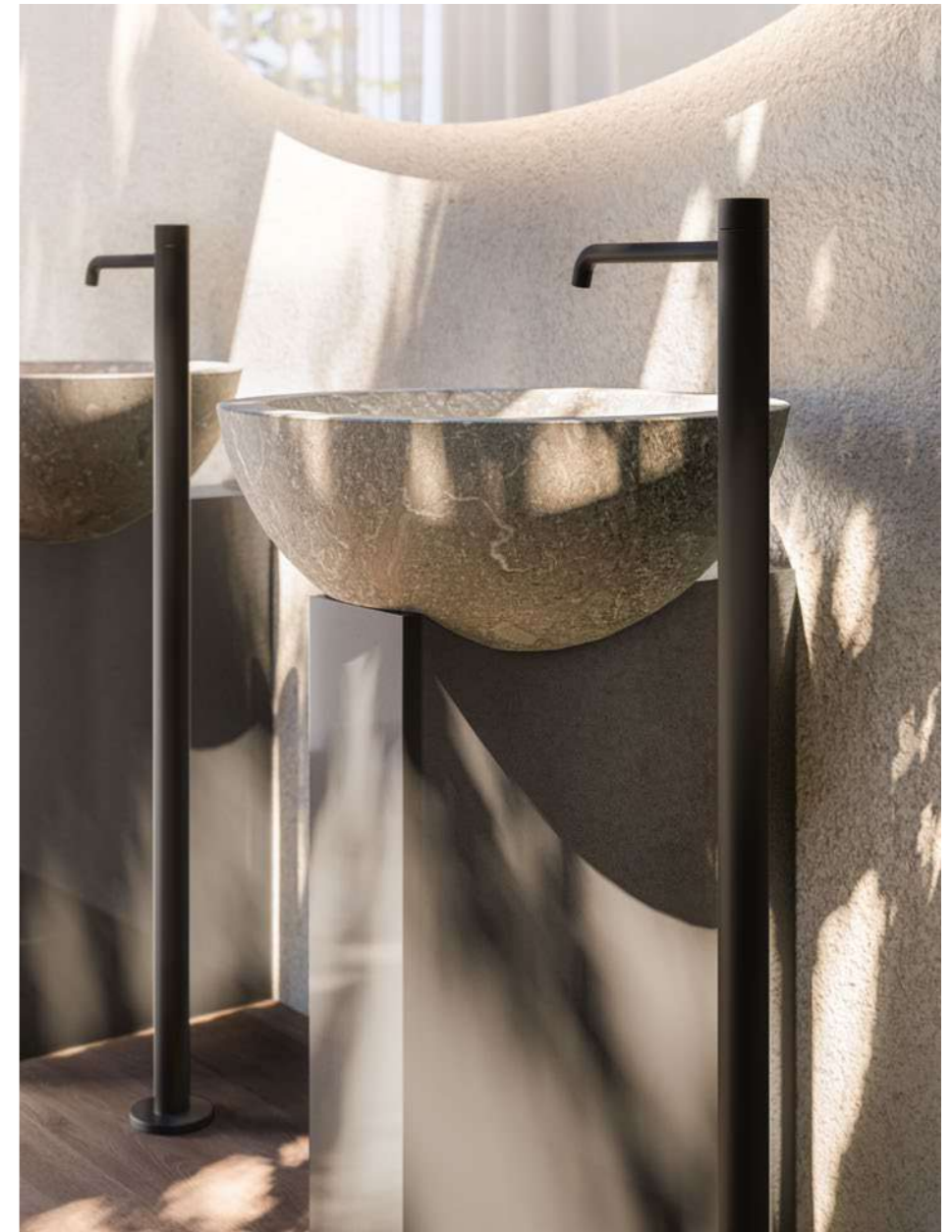








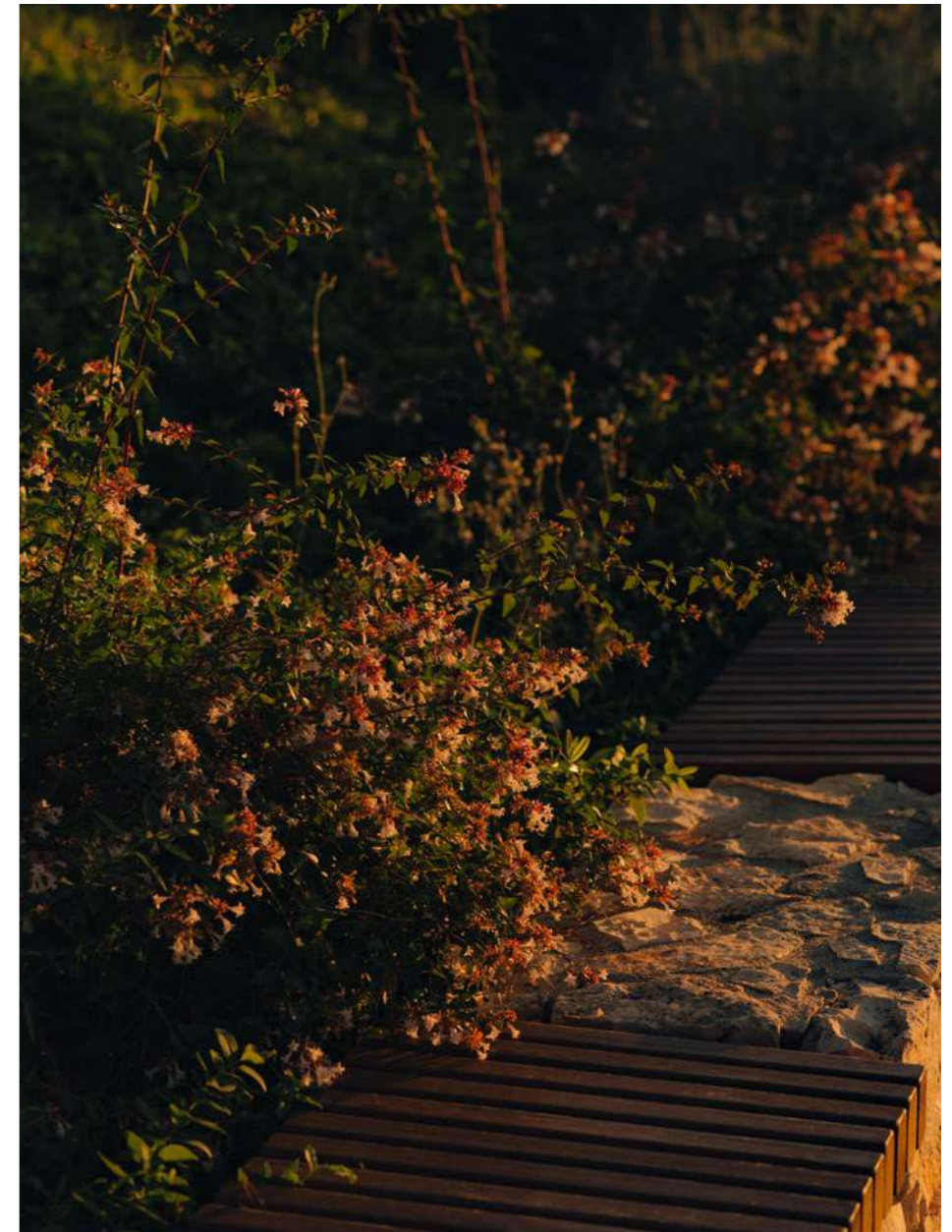
BOFFI







BOFFI







BOFFI



Create Your Own Space:  
ANTIBES

SYSTEM

DESIGN: PIERO LISSONI + CRS BOFFI

YEAR: 2015

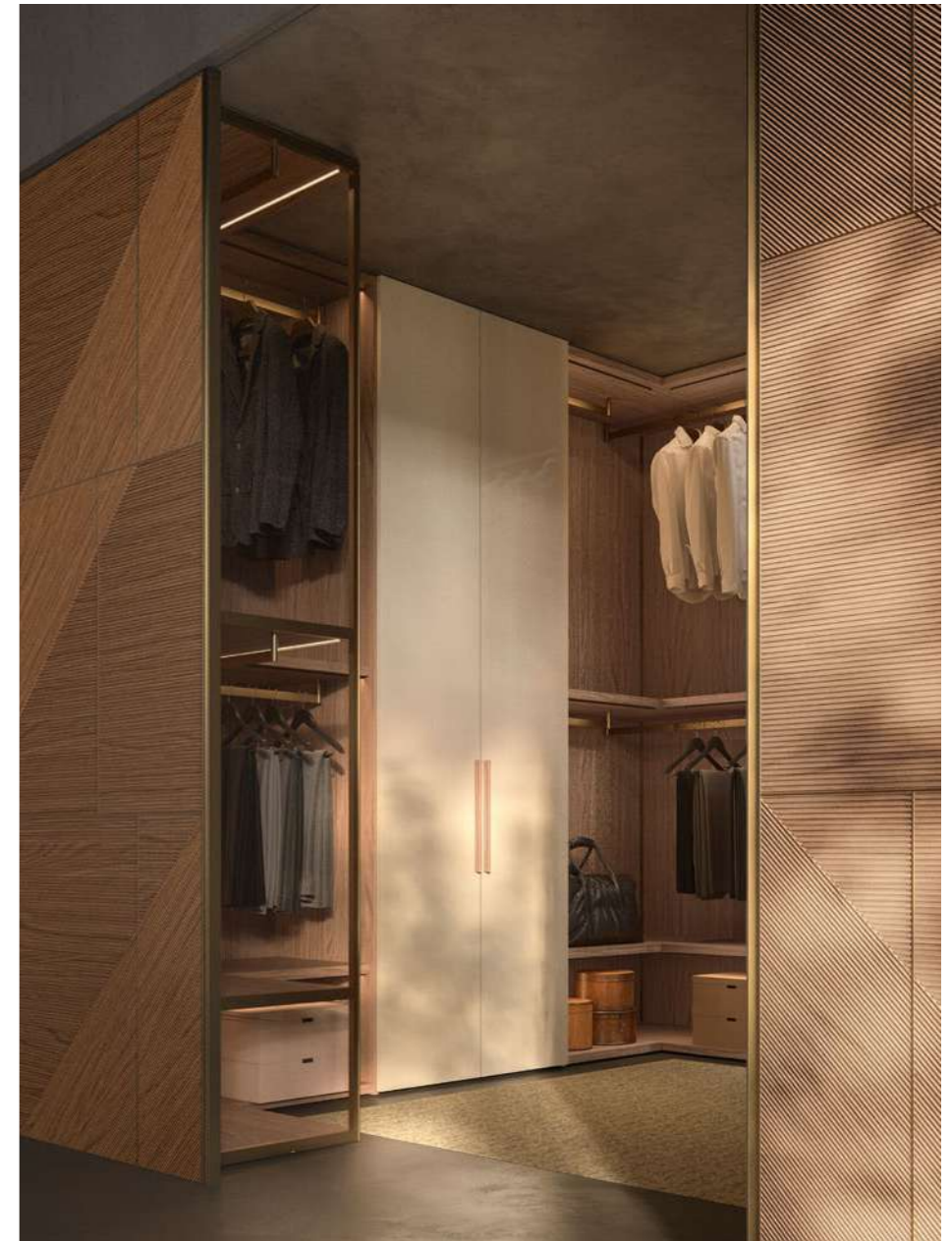
## CREATE YOUR OWN SPACE

The wardrobe and walk-in closet are set up to accommodate accessories, practical compositions, refined finishes and integrated lighting – in short, everything needed to suit large and small spaces. The system allows maximum flexibility depending on one's needs. Different elements can be combined by placing the Antibes wardrobe with doors alongside a door-free Antibes walk-in closet with side panels. The system allows space for hanging wine glass racks as well as cabinets or a fridge to store wine.











# Products Overview



11

COVE KITCHEN *kitchen* by Zaha Hadid, doors in Clay Pegaso, worktop in Grey Stone marble. – HIDE PRO by Piero Lissoni + CRS Boffi and PROGRAMMA STANDARD by CRS Boffi *tall units* in Clay Hydra, interior equipment: Quadro doors, frame in aluminium covered with Canaletto walnut with Metropolitan glass, top and back panels in Superwhite marble.



16

K14 *kitchen* (island) by Norbert Wangen, doors and worktop in white Carrara marble. – XILA *kitchen* (wall base units) by Luigi Massoni + CRS Boffi, doors in Clay Columbia, worktop in white Carrara marble. – XILA *tall units* by Luigi Massoni + CRS Boffi, doors in smoked oak veneer wood.



26

NOVANTA *kitchen* by Piero Lissoni in O\_Steel. – HIDE PRO by Piero Lissoni + CRS Boffi and PROGRAMMA STANDARD by CRS Boffi *tall units* in Clay Pegaso.



68

MINIKITCHEN OUTDOOR *kitchen* by Joe Colombo, structure in marine plywood coated in Lasermat Ingo black, chopping board in Iroko wood.



74

I FIUMI by Claudio Silvestrin, in Smoked dyed solid oak. – PIAVE *washbasins* by Claudio Silvestrin in Emperor Dark marble. – I FIUMI *mirror* by Claudio Silvestrin in Clay Hydra. – ECLIPSE *washbasin taps* by Studiocharlie, Boffi Fantini Aboutwater, in Matt Gun Metal PVD.



80

I FIUMI by Claudio Silvestrin in grey polyester. – RUBICONE *washbasins* by Claudio Silvestrin in Grey Stone marble. – LOTUS *mirror* by Naoto Fukasawa. – IKO *towel holder* by Kensaku Oshiro. – ECLIPSE *washbasin taps* by Studiocharlie, Boffi Fantini Aboutwater, in Matt Gun Metal PVD.



40

SALINAS *kitchen* by Patricia Urquiola, doors in MDI Bihara, worktop in Grey Stone marble. – SALINAS *peninsula* by Patricia Urquiola in solid American elm.



48

XO *kitchen* by Elisa Ossino, doors in polyester Savannah brown, worktop in Breccia Imperiale granite. – XO *peninsula* by Elisa Ossino in solid American elm. – XO *hanging units* by Elisa Ossino in Clay Ara. – XILA *media tall units* by Luigi Massoni + CRS Boffi in polyester Savannah brown with XO *sides and top* by Elisa Ossino in Breccia Imperiale granite.



63

K6 OUTDOOR *kitchen* by Norbert Wangen, doors and worktop in AISI 316 stainless steel.



82

I FIUMI by Claudio Silvestrin in Petra red polyester. – PIAVE *washbasins* by Claudio Silvestrin in Emperor Dark marble. – I FIUMI *mirror* by Claudio Silvestrin in Clay Hydra. – PO *bathtub* by Claudio Silvestrin in Emperor Dark marble. – NOVANTA STONE WALL SYSTEM by Piero Lissoni white Carrara marble. – GARDEN *washbasin taps and bathtub spout* by Piero Lissoni, Boffi Fantini Aboutwater, in Matt Gun Metal PVD.



92

ANTIBES *wine system* by Piero Lissoni, structure and interior equipment in black anodised aluminium frame and smoked oak. MY ROOM – JAPO J2 *architectural partitioning system* in transparent glass with black anodised aluminium frame.



94

ANTIBES *walk-in closet* by Piero Lissoni, structure and interior equipment in melamine-coated elm, aluminium bronze finish frame, doors in polyester pebble grey. – CINETICA doors in solid wood paneling engraved on the front and mirrored glass on the back.

## AWARDS

Every award Boffi has won in the fields of design and sustainability is proof of its commitment to rigorous research, experimentation and creative innovation. We are proud and grateful for the achievements earned in these 90 years of business.

1995	BOFFI	ADI Compasso d'Oro Career Award
2003	CASE SYSTEM by Piero Lissoni, kitchen	Red Dot Award for best product design
2004	CUT by Mario Tessarollo and Tiberio Cerato, taps	ADI Compasso d'Oro Career Awards selection Red Dot Award for best product design
2007	TABLE SYSTEM by Piero Lissoni, kitchen	Chicago Atheneum Good Design Award
2008	+/- DROR, cabinets	Chicago Atheneum Good Design Award
2011	APRILE by Piero Lissoni, kitchen	EDIDA (Elle Decoration International Design Award)
2012	K20 by Norbert Wangen, kitchen	Chicago Atheneum Good Design Award
	CTLINE by Victor Vasilev, tall units	Chicago Atheneum Good Design Award
2014	K20 by Norbert Wangen, kitchen	ADI Compasso d'Oro honourable mention
2015	SALINAS by Patricia Urquiola, kitchen	Wallpaper* Design Award and EDIDA (Elle Decoration International Design Award) for best kitchen
2016	SALINAS by Patricia Urquiola, kitchen	ADI Compasso d'Oro honourable mention
2018	ECLIPSE by Studiocharlie, taps	ADI Compasso d'Oro Award
	COMBINE by Piero Lissoni + CRS Boffi, kitchen	Archiproducts Design Award in kitchen category
	Aboutwater (Boffi + Fantini) AA/27 by M. Anastasiades, taps	Archiproducts Design Award in bathroom category
	COVE KITCHEN by Zaha Hadid	EDIDA (Elle Decoration International Design Award) in the kitchen category
2019	K6+6 by Norbert Wangen, kitchen	Archiproducts Design Award in kitchen category
	ANTIBES SYSTEM by Piero Lissoni, storage system	Archiproducts Design Award in furniture category
	R.I.G. BATHROOM by Mikal Harrsen, bathroom	Archiproducts Design Award in bathroom category
2020	R.I.G. BATHROOM by Mikal Harrsen, bathroom	ADI Compasso d'Oro honourable mention
	Aboutwater (Boffi + Fantini) AK/25 by Paik Sum Kim, taps	ADI Compasso d'Oro Award
2021	COMBINE by Piero Lissoni + CRS Boffi, kitchen	Archiproducts Design Award in kitchen category
	ANTIBES SYSTEM by Piero Lissoni, storage system	Archiproducts Design Award in furniture category
2022	CASE 5.0 – BECOMING by Piero Lissoni	Archiproducts Sustainability Award
	MINIKITCHEN BY JOE COLOMBO	ADI Compasso d'Oro Career Award
	COMBINE EVOLUTION BY PIERO LISSONI	ADI Compasso d'Oro honourable mention
2023	ANTIBES SYSTEM by Piero Lissoni	Archiproducts Design Award

COLOPHON

NEW COLLECTIONS 2024

Creative Direction  
Boffi | DePadova

CATALOGUE

Creative Direction  
Davies Costacurta

Graphic Design  
Studio Costacurta

Styling  
Greta Cevenini  
Leandro Favalaro

Set design and rendering  
Nudesign

Post production and color separation  
Nudesign

Printed in Italy  
Nava Press, 2024

Special thanks to  
De Castelli  
Domenico Mori  
Gaggenau  
Inalco  
Mosaicomicro e Nerosicilia, Framma Mosaici Srl

Each Boffi product is made in Italy in accordance with ISO 9001:2015 regulations. The ISO 14001:2015 standards ensure the environmental impact at every stage of production. The quality and environmental policies provide continuous improvement actions that involve the entire organization. Boffi products are guaranteed for 3 years, as of the date of the guarantee certificate issue.

Some products shown in this catalogue may not be in the Boffi product listing. Modifications and improvements to products could vary from the solutions presented.



Boffi means experimentation and high-end manufacturing that is in constant evolution. It is a vigorous search for beauty and functionality. It looks to create a distinct *way of living*.