

WATER INNER
Bathroom, Wardrobe & Shelving Collections



WATER INNER
Bathroom, Wardrobe & Shelving Collections



SECTION I, Bathrooms
6 — 139



8	B14	78	PH Stone
12	B15	82	PHC
16	Case 5.0 Bath	86	Quadtwo
30	Flyer	90	R.I.G. Bathroom
40	Free Zone	102	Round Sabbia Stone
52	I Fiumi	106	Sabbia Stone
60	I Fiumi ST	110	Simple
68	L18	118	Upper Units
74	Lapis	132	Wood-In

SECTION II, Wardrobe & Shelvings
140 — 195



142	Antibes	190	Brompton
176	Antibes System		



A WAY OF LIVING

Boffi is the story of a manufacturing endeavour started in 1934 where the key players remain the artisans, with their manual skills and know-how, who are able to shape premium materials into forms that stand out for their quality and beauty.

It starts off with gestures, manual skills, environments, places, tools and the machines worked by those who come into contact with materials and transform them. This high-level approach to design involves systems operating as homogeneous units to express an architectural vernacular for interiors. By applying a bespoke concept, Boffi offers a vast range of finishes and materials of the highest quality designed to satisfy even the most discerning tastes. The feasibility of a requested finish, colour or essence is immediately evaluated and matched by products recognised for their technical components and quality that are backed by versatile carpentry and production teams. The ability to choose unique materials has always been a prerogative of Boffi in the same way a writer or artist has a preference for a specific word or colour. These are the building blocks that make up the project. It is the source code and the direct link with nature and the interior setting. It represents a concrete approach to interior living, one rooted in a vision of Italian and international design excellence.

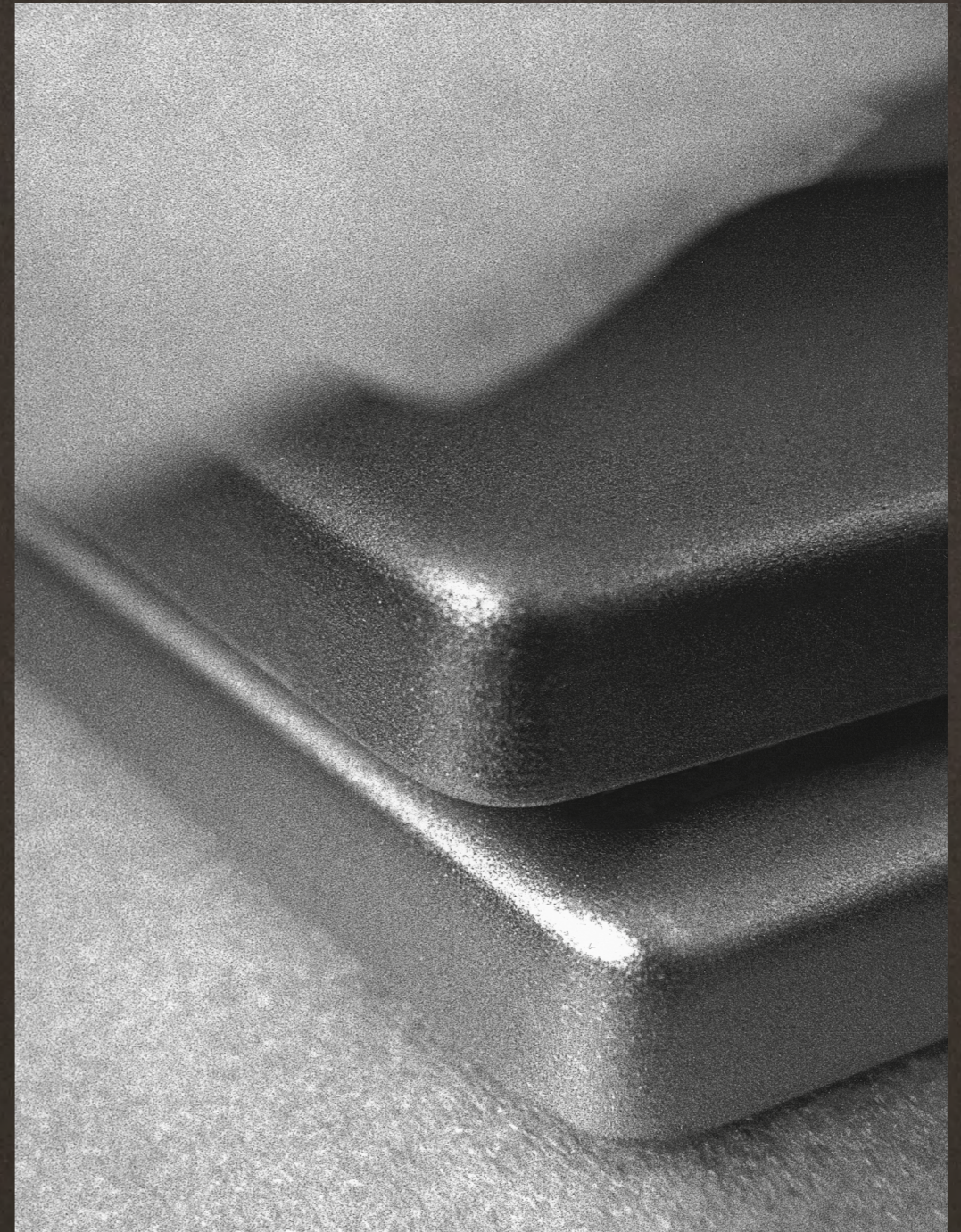
Boffi has always committed itself to detailed research, with quality as its number one priority followed closely behind by sustainability and circular materials that, together with durability, represent the key attributes of a manufacturing system that is renowned across the globe as a complete and coherent design offering.

Ninety years of experience linked to the manufacturing of high-end furniture has allowed Boffi to develop a unique entrepreneurial skill set and a preeminent design culture. Today, it is the hub of a carefully selected network of artisans specialising in niche tasks and manufacturing. In fact, there is an exact science required to work the materials that is expressed in the precise gestures of artisans working with their hands. From design to implementation, each Boffi manufacturing phase is undertaken with the utmost care and undergoes a series of checks on the structure and finish to guarantee the final quality of the product. This high level of industrial craftsmanship adheres to principles of sustainable development, guaranteed by international certifications and made possible by rigorous oversight. The aim is to provide a range of solutions, finishes, processes and compositions that serve as an inspiration for clients. A variety of materials and colours offer a subtle charm and unparalleled decorative features help to enhance the quality and preciousness of the unique products created by Boffi thanks to creative and technical production methods. From initial sketch to final product, the client's dream project is attainable, drawing on assistance from the Creative Team that manages to overcome the boundaries of static design to enhance the functions and aesthetics in order to best suit personal tastes.



Impeccable surfaces are derived from materials of the highest quality. Over the years, the exceptional partnerships within the Boffi universe have contributed to achieving high standards of certification.





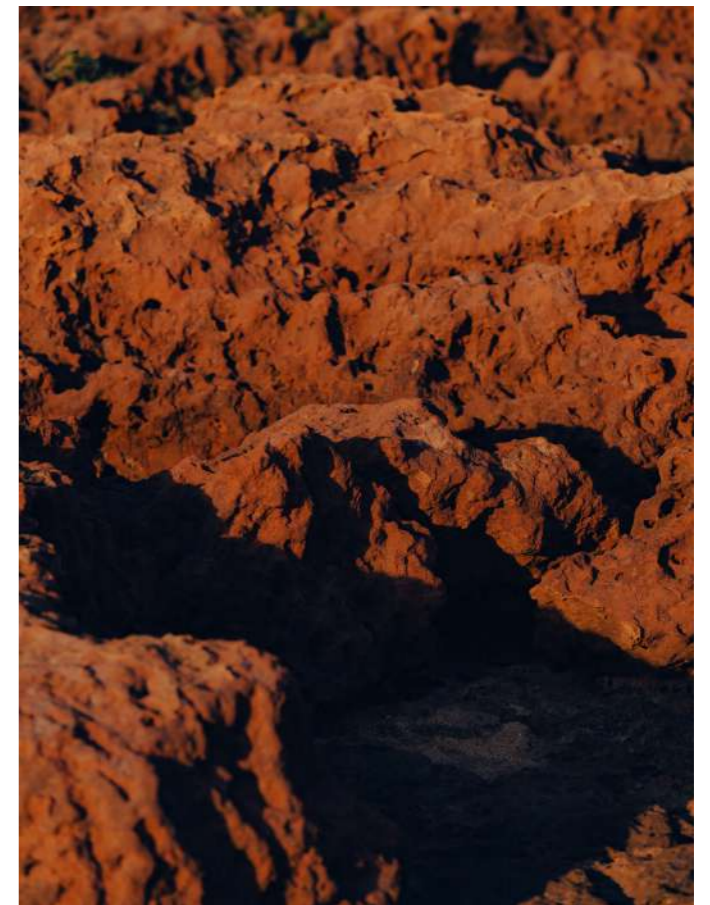


The creative and entrepreneurial leadership of Boffi is able to transmit today the same passion as those who founded the brand. The solid foundation of this project is thanks to its personnel, who are an essential resource for this Made in Italy reality that is indelibly linked to the contemporary history of design.



This story begins inside a small artisan workshop. Each evening, the creative spark was lit as Piero Boffi experimented, researched and executed pieces. The year was 1934 and the first inklings of what would become systems that would go on to be part of the history of furniture design were taking shape. This instinctive passion for shaping new ideas was passed on by Piero to his sons Dino, Pier Ugo and Paolo. In 1947, Piero established the Boffi company, an entrepreneurial culture which would lead to an internationalisation process overseen by the young Paolo Boffi that came to fruition following a fortuitous meeting with future Boffi CEO & President Roberto Gavazzi. The kitchen would become a convivial space, rethought in terms of an architectural language, modularity, functions and colours. The possibilities were, and are, endless. With Paolo Boffi's far-sighted ideas, there came the need for an effective communication strategy and international exposure to distinguish itself from the chaos of the mainstream market. This took place under the creative guidance of Piero Lissoni and the innovative management of Roberto Gavazzi. From the kitchen and bathroom models to the wardrobe systems, it took little time to consolidate the entrepreneurial project as an intuitive, comprehensive offering. Over the course of these ninety years, one has seen generations of creatives, employees, collaborators and inspiring partnerships that are, with every gesture, an attempt to find the same creative spark that was lit in that small workshop in Cesano Maderno. From those fairy-tale beginnings, the dream has become a reality.

Boffi means experimentation and high-end manufacturing that is in constant evolution. It is a vigorous search for beauty and functionality. It looks to create a distinct *way of living*.





Rational bathroom design moves away from a formal, rigid aesthetic by focusing on comfort, space and well-balanced functionality. Design takes on a new meaning in modern spaces that allow fluidity of movement and which are combined with technology, mouldable materials and a range of shapes and dimensions. The focus is on creating a style consistent with the other areas of the home and marked by the quality Boffi is known for.

Bathrooms



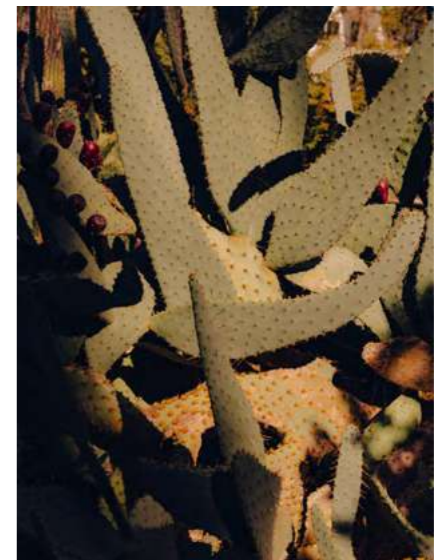
WATER INNER

Ultraclean Lines:
B14

BATHROOM

DESIGN: NORBERT WANGEN

YEAR: 2008



ULTRACLEAN LINES

This well-defined system captures the essence of a well-structured, modular design. For the B14, Norbert Wangen proposes the same bevelled edges seen in the countertop for the K14 kitchen. In the bathroom, the 35° edges streamline the composition and create space between the worktop and base unit to grip the doors, which are bevelled on the upper portion. Countertops with a five centimeters thickness are available in composite materials, marble, stone, quartzite and granite.





WATER INNER



Aesthetic Symmetry:
B15

BATHROOM

DESIGN: NORBERT WANGEN

YEAR: 2008

AESTHETIC SIMMETRY

A clear-cut design with countless applications and variations retains its formal lines no matter the configuration. B15 uses the bevelled edges that have become the designer's signature to transform a simple monobloc base unit, with its clean, linear profile, into a sophisticated piece of furniture. The compact, symmetrical form produces a standout design with exacting proportions.





WATER INNER

Design Evolution:
CASE 5.0 BATH

BATHROOM

DESIGN: PIERO LISSONI

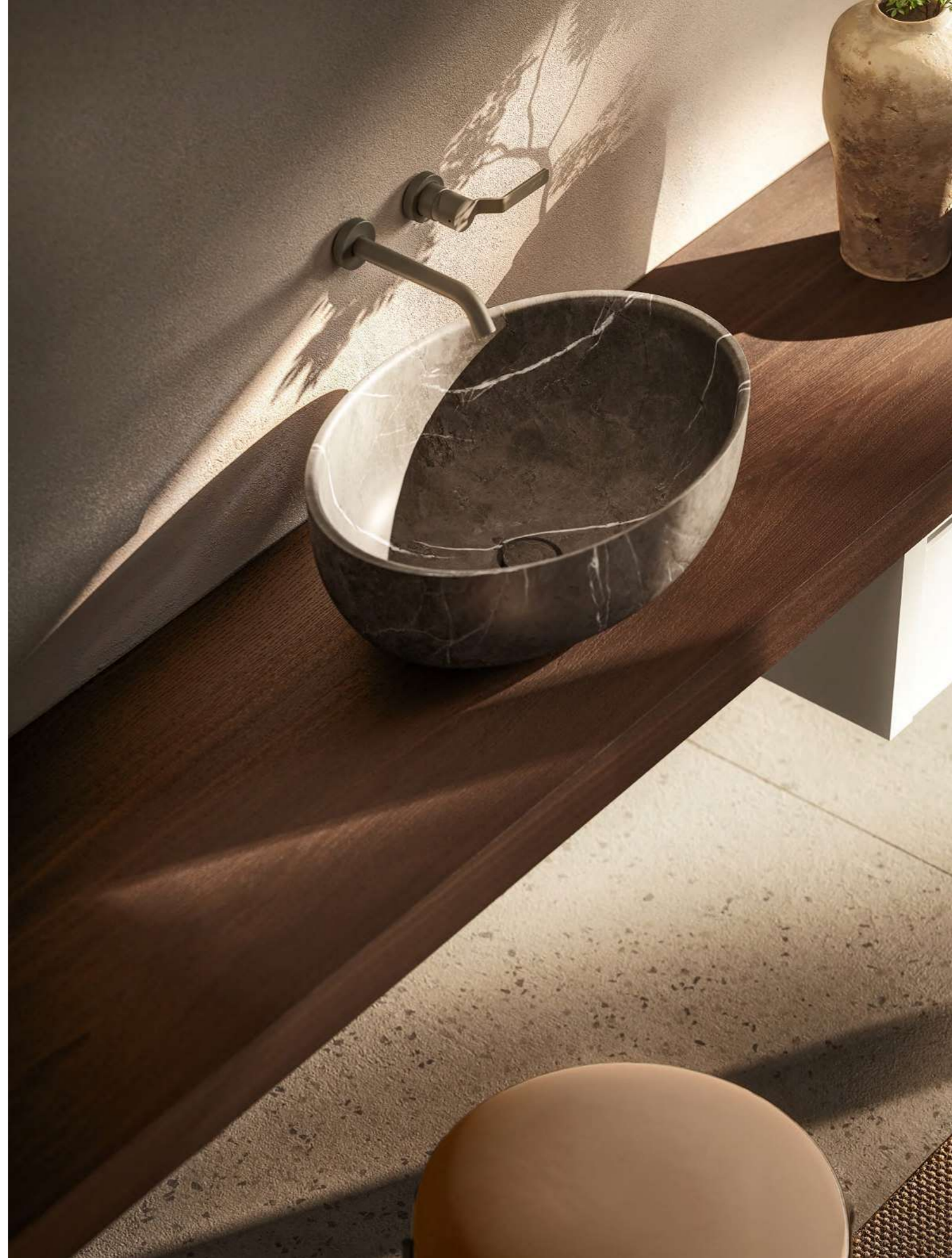
YEAR: 2023





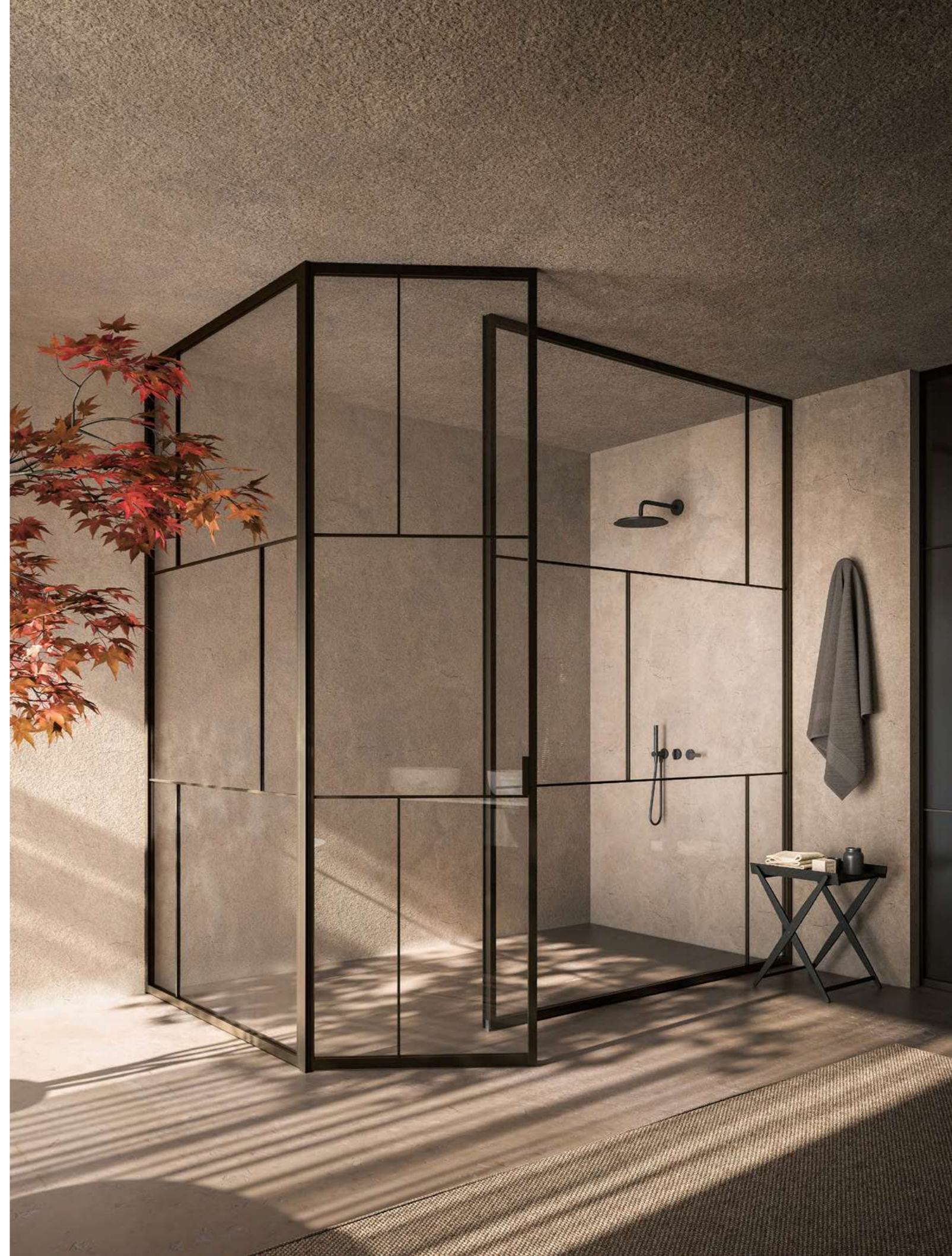
DESIGN EVOLUTION

The eye-catching shape of the CASE 5.0 kitchen is now introduced in the bathroom as a wall composition with supporting shelves. It revolves around functionality and design rigour with exclusive materials – monochromatic and tactile clay finishes – and the sharp, attractive lines seen in the front handle.





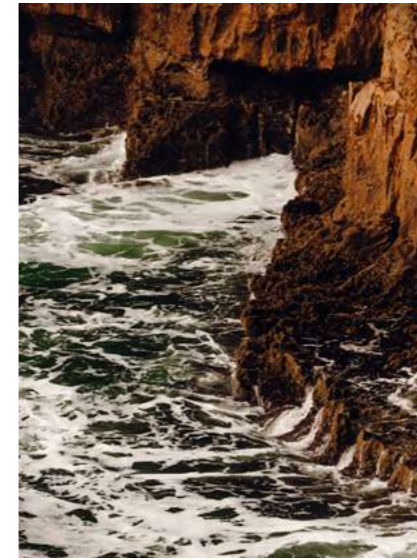








WATER INNER



The Aesthetic Sign of Functionality:
FLYER

BATHROOM

DESIGN: CRS BOFFI

YEAR: (2013) 2020



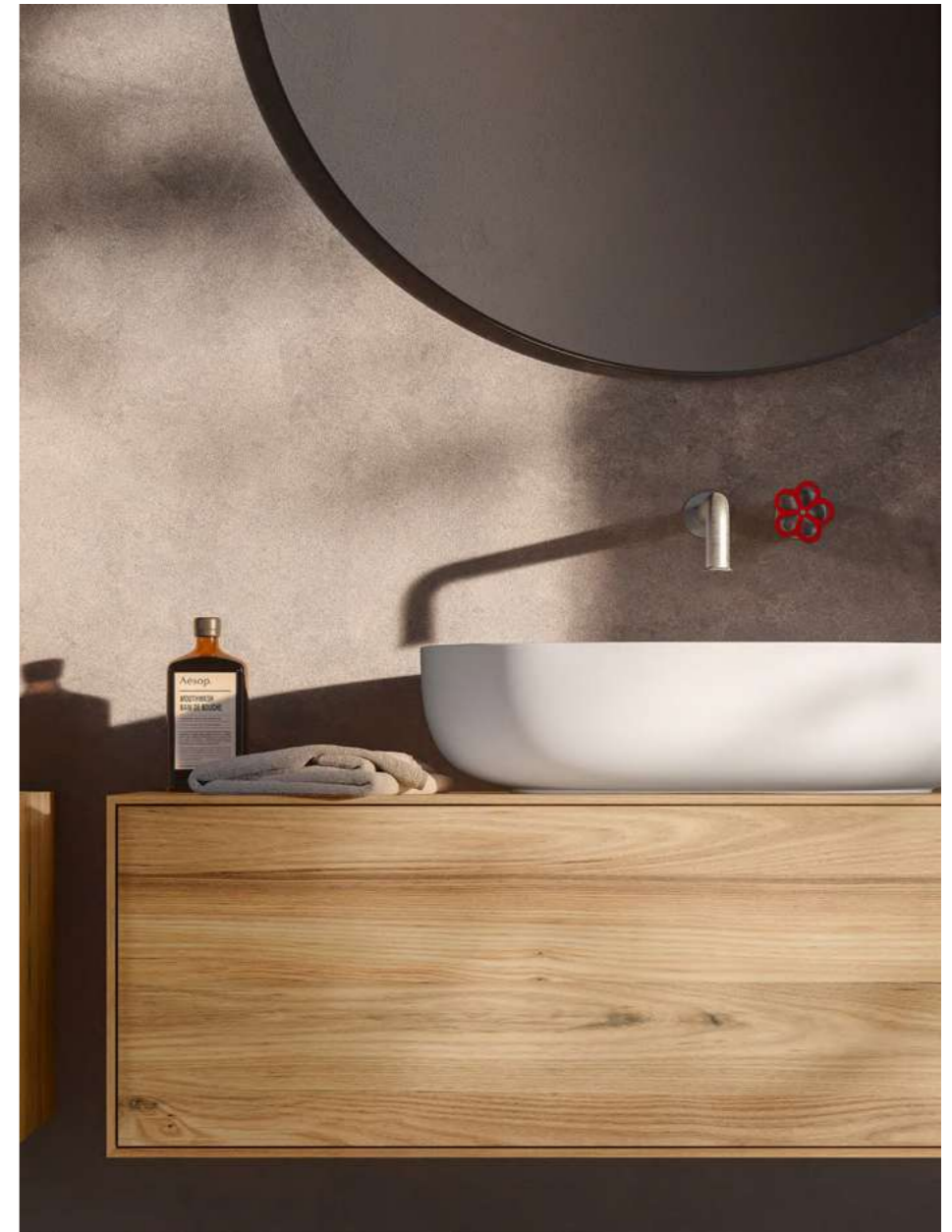
THE AESTHETIC SIGN OF FUNCTIONALITY

The name calls to mind an airy lightness. Flyer is available in a linear, wall-mounted version for the bathroom featuring surfaces to support sinks and taps as well as cabinets that include an undercounter drawer with pressure opening. The goal of the Flyer is to avoid having limits placed on modularity and materials.





WATER INNER







WATER INNER

Essential Lines and Monomateric Appearance:
FREE ZONE

BATHROOM

DESIGN: CRS BOFFI

YEAR: (2017) 2020





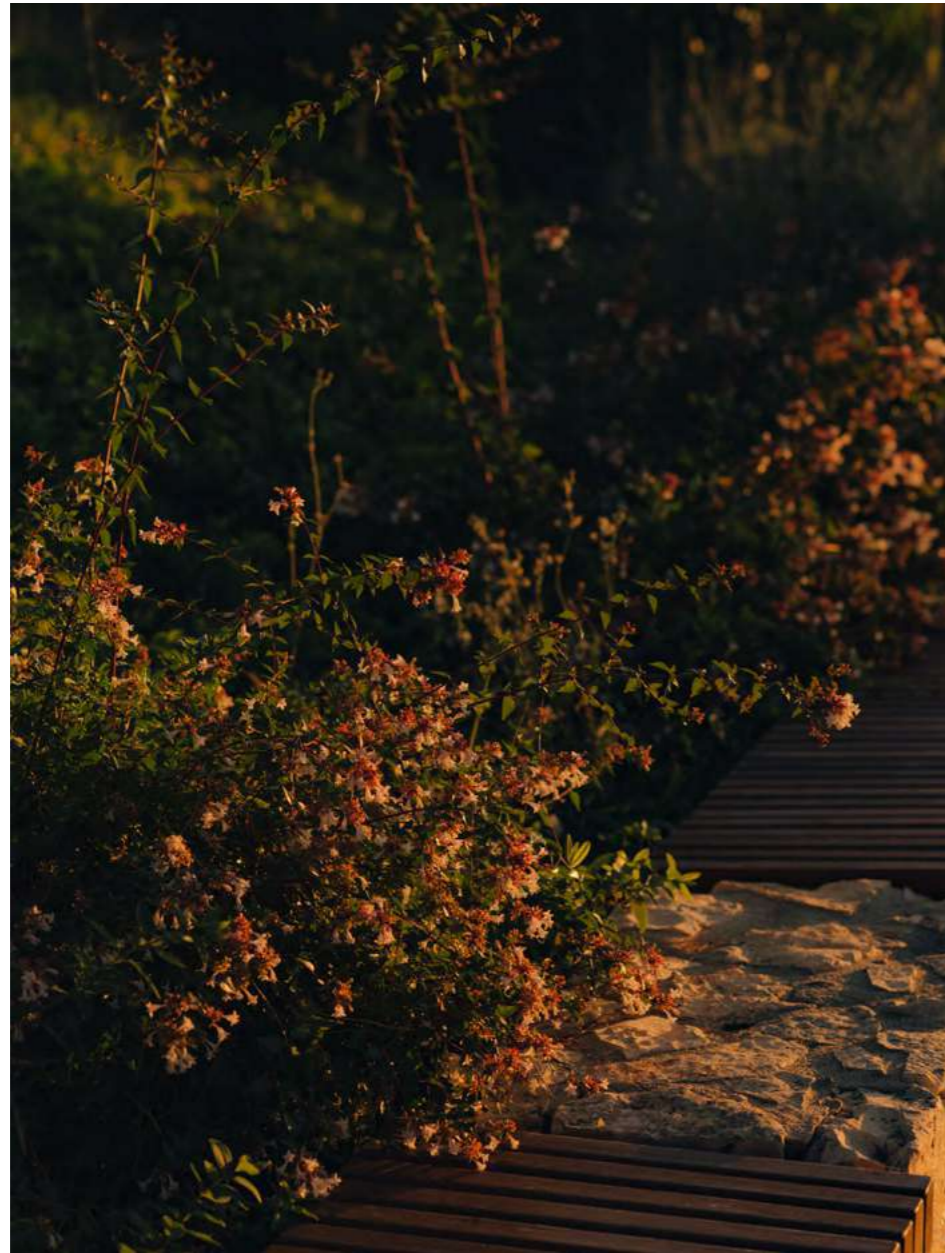
ESSENTIAL LINES AND MONOMATERIC APPEARANCE

The Free Zone modular system is the brainchild of the Boffi Research & Development Centre. The wall-mounted units with handle-free fronts provide a visually clean composition. In addition to a selection of lacquers and materials from wood and stone to composite, glass and metal, there is a choice of opening methods for the cabinets featuring hinged doors, pull-out compartments or coplanar sliding doors to satisfy ever individual taste.











WATER INNER



Elements and Atmospheres:
I FIUMI

BATHROOM

DESIGN: CLAUDIO SILVESTRIN

YEAR: (1999) 2024

ELEMENTS AND ATMOSPHERES

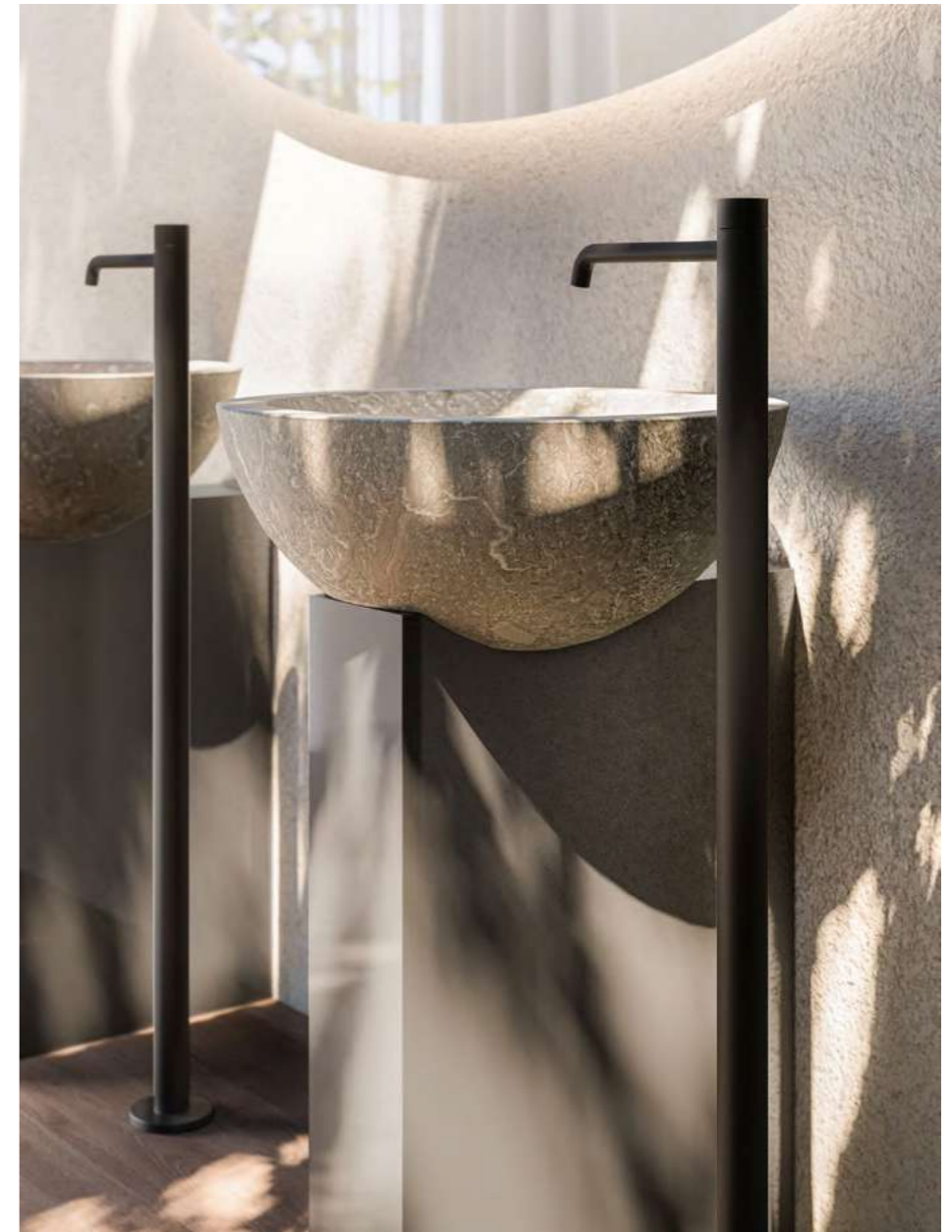
The re-edition of I Fiumi, a design by Claudio Silvestrin, is characterised by wall-mounted base units with a reduced height for the bathroom that avoid compromising on space. The clean lines, without joints, remain together with the 45° bevelled edge. The 60-, 90- and 120-centimetre modules can be combined with the reposed Piave countertop washbasin. The new 2024 version introduces the monobloc version with a wooden column and Rubicone sink together with a precious mirror.







WATER INNER





WATER INNER

Poetic Architecture:
I FIUMI ST

BATHROOM

DESIGN: CLAUDIO SILVESTRIN

YEAR: 2011

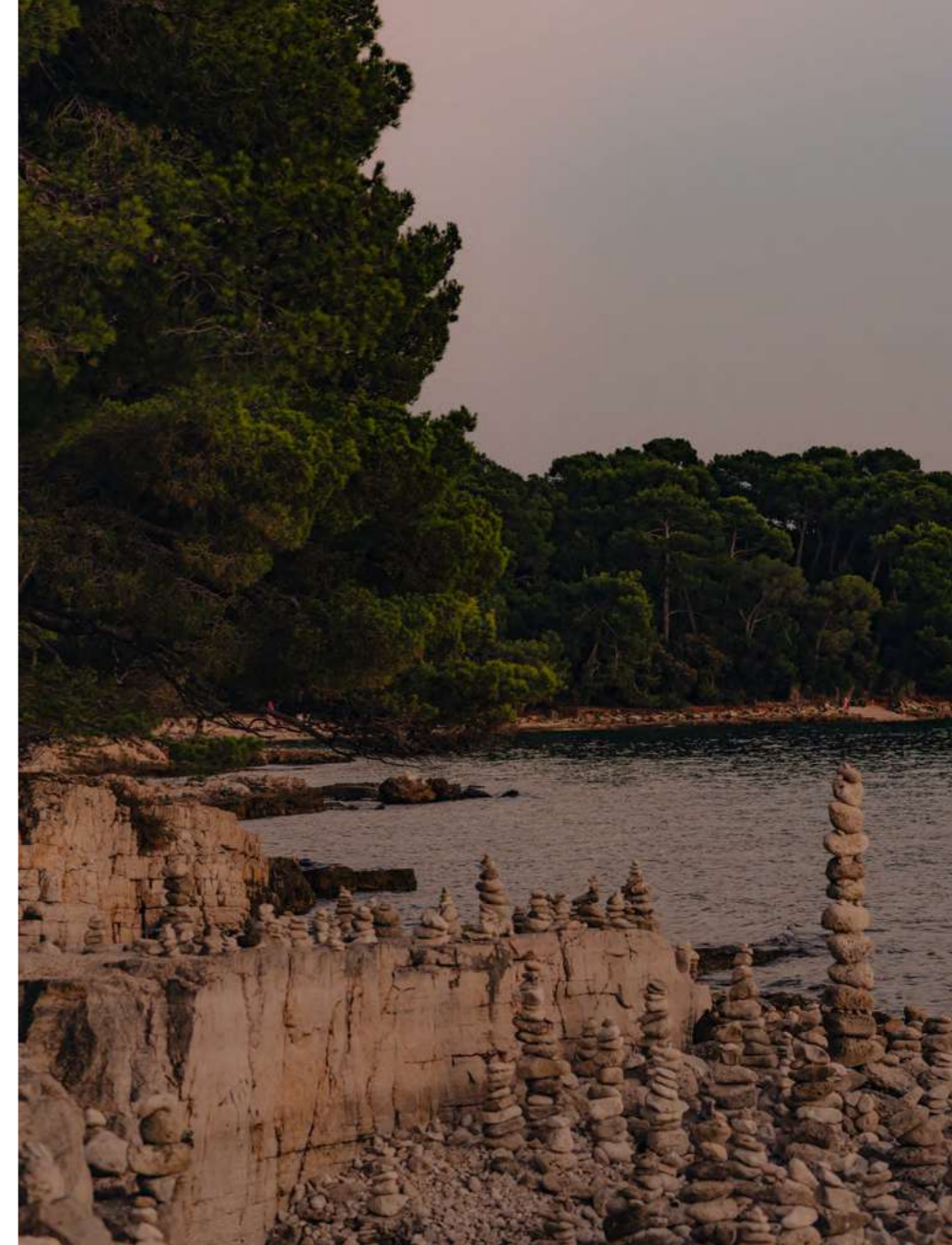




POETIC ARCHITECTURE

Claudio Silvestrin is known for his precise, architectural aesthetic. The absence of joints and edges is achieved with a folding technique akin to doubling up a delicate sheet of paper. The upper sides of the fronts and side panels have a 45° bevelled edge. Here, continuity is the aim and generates both a visual and functional clarity.







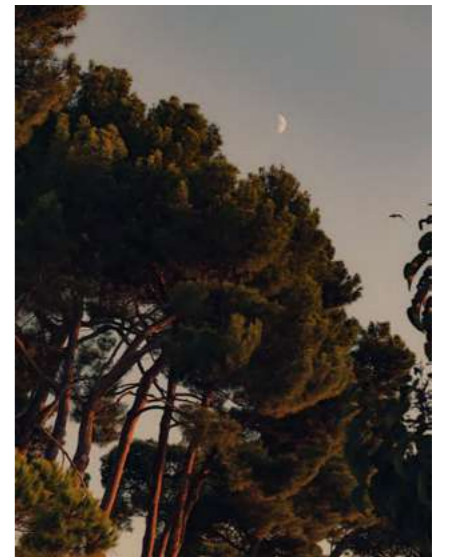
WATER INNER

Pure Minimalism:
L18

BATHROOM

DESIGN: NORBERT WANGEN

YEAR: 2018





PURE MINIMALISM

The minimal rectangular countertop, almost imperceptible in its presence, is made of solid marble with integrated single or double washbasin. The L18 wall-mounted washbasin is created from a single block with rounded corners to highlight its reduced thickness.





WATER INNER

Innovative Thinking:
LAPIS

BATHROOM

DESIGN: PIERO LISSONI

YEAR: (2017) 2021



INNOVATIVE THINKING

Piero Lissoni creates Lapis, an out-of-the-ordinary column washbasin crafted in aluminium, natural stone and brass that imbues the minimalist rectangular column with classic sculptural features. The project is enhanced by the unexpected combination of sophisticated materials. Lapis was conceived as a centrepiece, without an overflow, to make a statement in the bathroom.





WATER INNER



Transforming the Stone:
PH STONE

BATHROOM

DESIGN: PIERO LISSONI

YEAR: 2017

TRANSFORMING THE STONE

This stone washbasin, which can be installed against the wall or placed in the centre of the room, is an elegant column available in marble, stone or granite. Its smooth cylindrical shape brings into focus the veining of the materials that are treated with water and oil repellents to ensure durability.





WATER INNER

Less is More:
PHC

BATHROOM

DESIGN: PIERO LISSONI

YEAR: 2005



PHC

LESS IS MORE

Following in the footsteps of the version in stone, the sophisticated PHC model inserts itself into the bathroom in an almost imperceptible way. Depending on one's taste, the model can serve as a centrepiece or against the wall and made in Corian® or Cristalplant®.





WATER INNER

The Essential Cube:
QUADTWO

BATHROOM

DESIGN: JEFFREY BERNETT

YEAR: 2012



THE ESSENTIAL CUBE

Quadtwo is a physical expression of aesthetic minimalism. Ideal for residences and contract commissions where space is at a premium, the compact cube is suspended off the ground and conceals everything inside a tightly packed space. The storage compartments remain hidden inside the monobloc structure in white Cristalplant® – simply follow the lines to find them.





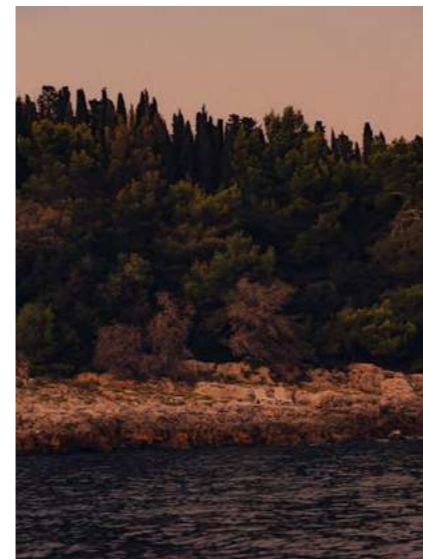
WATER INNER

Simple Geometry:
R.I.G. BATHROOM

BATHROOM

DESIGN: MIKAL HARRSEN

YEAR: 2019



SIMPLE GEOMETRY

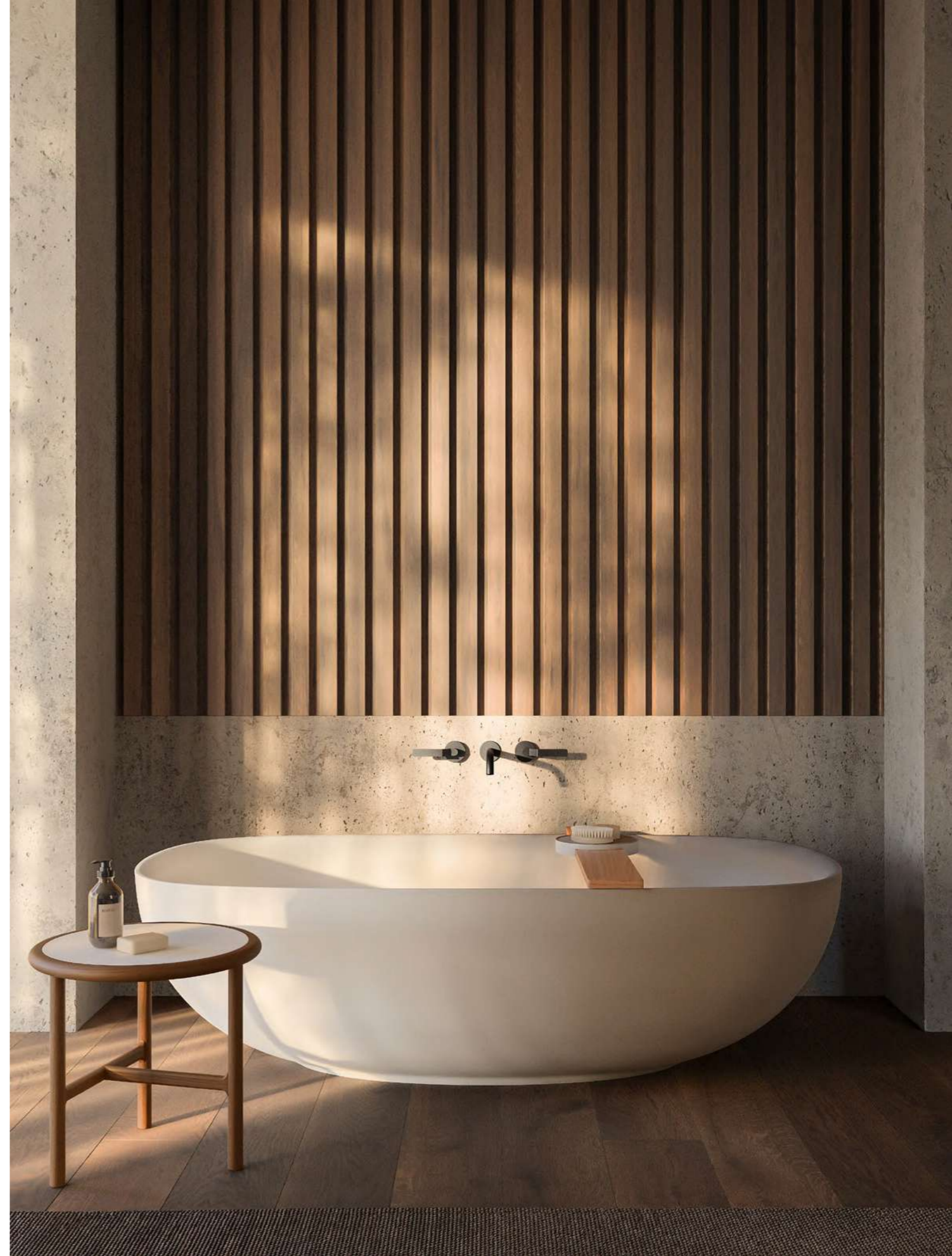
Designed by Mikal Harrsen, the R.I.G. system perfectly distils a concept down to its essence. This functional, minimalist design emphasises simple geometry and flexibility. The R.I.G. Bathroom offers one the possibility to create highly customisable wall-mounted or island compositions. The streamlined frame is made up of metal components fashioned into shelving, tops, fronts, panels and countertop washbasins.













WATER INNER

Tactile Shapes:
ROUND SABBIA STONE

BATHROOM

DESIGN: NAOTO FUKASAWA

YEAR: 2021



TACTILE SHAPES

The Sabbia family is further enhanced with new variations that don't take away from the delicacy of the shape. Round Sabbia Stone, available in countertop or pedestal washbasin as well as a bathtub version, share the same rounded shape for the base which further softens the profile and support structure.





WATER INNER



Sculpting Comfort:
SABBIA STONE

BATHROOM

DESIGN: NAOTO FUKASAWA

YEAR: 2008

SCULPTING COMFORT

Through the use of natural materials, Naoto Fukasawa has dreamed up an oval shape with soft, appealing lines to convey a sense of comfort. The sculptural silhouette available in a raised countertop, built-in, wall mounted or freestanding pedestal version and monobloc bathtub, is realised thanks to the intelligent use of Cristalplant® and marble.





WATER INNER

Effortless Design:
SIMPLE

BATHROOM

DESIGN: PIERO LISSONI + CRS BOFFI

YEAR: 2010

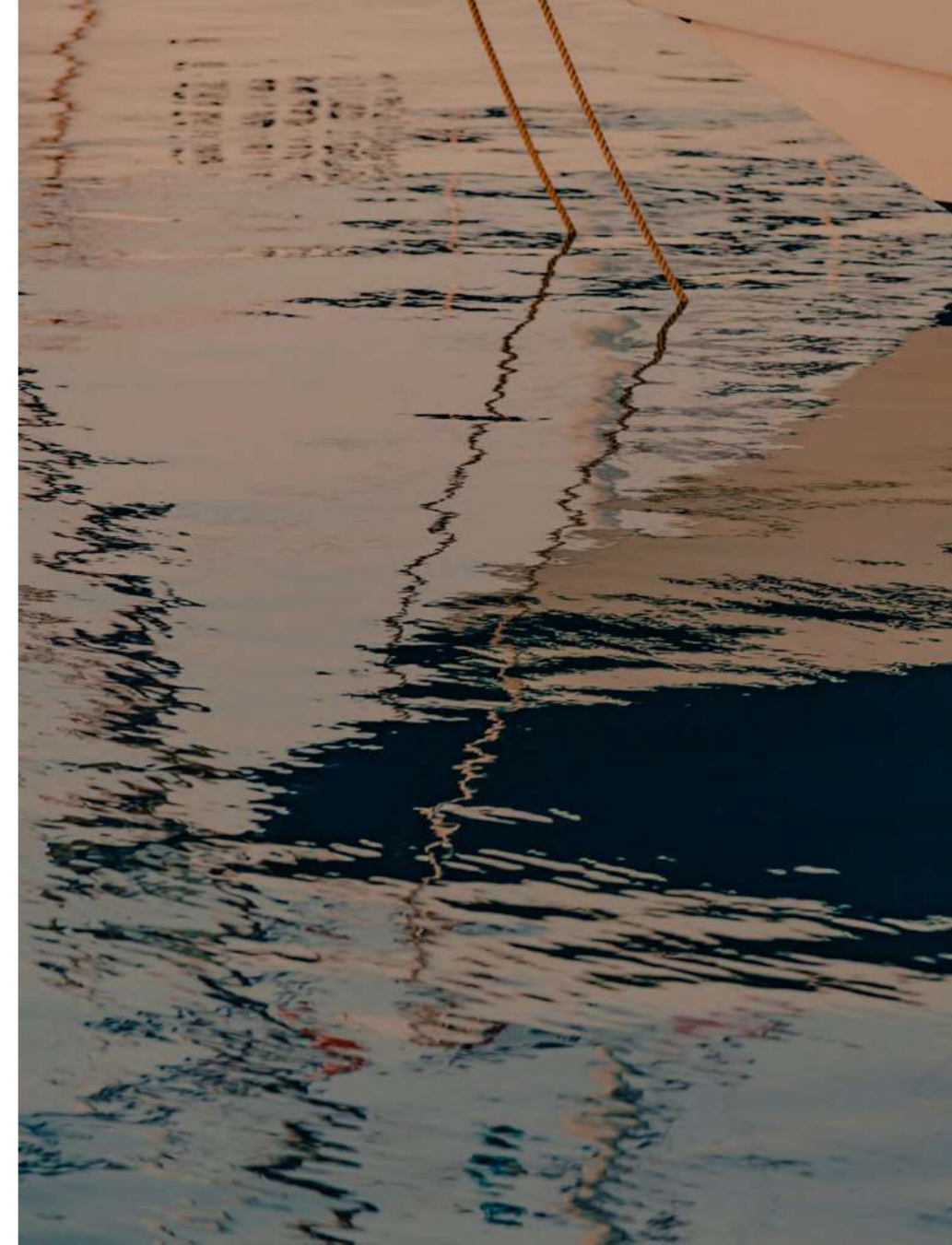


SIMPLE

EFFORTLESS DESIGN

The importance of essential lines is seen in the clean, refined shape of Simple with its absence of handles as well as its doors and drawers that offer pressure opening. The modular system includes suspended containers divided into elements of various sizes that can be created in numerous material variations, thus allowing a range of freedom when composing the unit but which always stresses its trademark aesthetic minimalism.

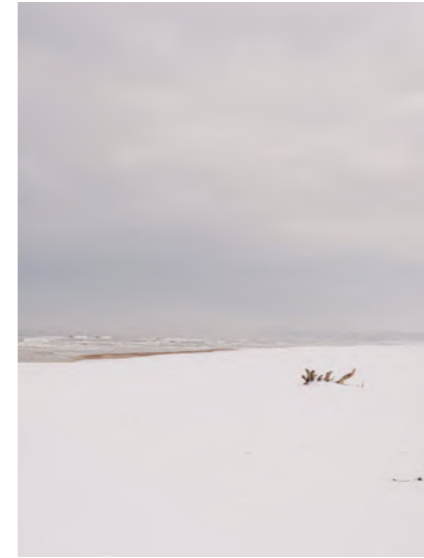








WATER INNER



In Search of Flexibility:
UPPER UNITS

BATHROOM

DESIGN: PIERO LISSONI + CRS BOFFI

YEAR: 2018





IN SEARCH OF FLEXIBILITY

Upper offers the flexibility of a complete bathroom furnishing project in a series of base units, open containers and boiserie with shelves and mirrors. The variety of elements and materials allows you to create customisable projects in order to sync designwise with the rest of the home. The Upper Units suspended bases are characterised by countertop, fronts and panels with sides bevelled at 45° so when closed the piece's thickness is imperceptible.







WATER INNER







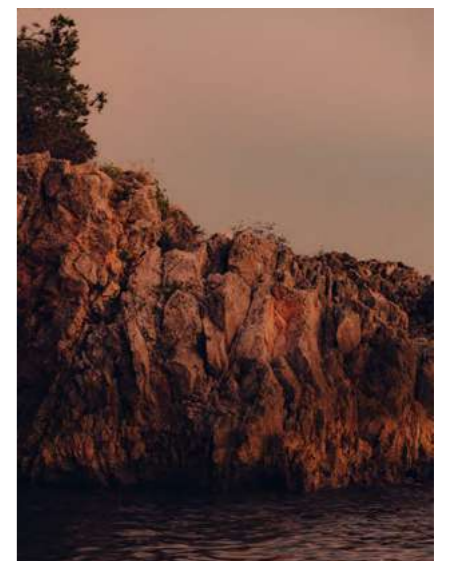
WATER INNER

Incisive Inspirations:
WOOD-IN

BATHROOM

DESIGN: PIERO LISSONI

YEAR: 2016





INCISIVE INSPIRATIONS

Piero Lissoni draws inspiration from artisan techniques focused on working the wood with one's hands to craft the perfect joint. This is the aesthetic appeal of Wood-In, with its visible corner joints made exclusively from fine woods. The system integrates countertop washbasins, which can be completed with an optional square base that can be made in different materials such as glass, stone or granite.





WATER INNER



From bookshelves to wardrobes, Boffi furniture systems are available in a range of compositions that highlight their modular features. There are endless design possibilities to create sophisticated, one-of-a-kind ambiences made up of details that combine aesthetics finishes and the highest functional quality.

SECTION II

WATER INNER

140 – 195

Wardrobes, Shelvings



WATER INNER



Create Your Own Space:
ANTIBES

SYSTEM

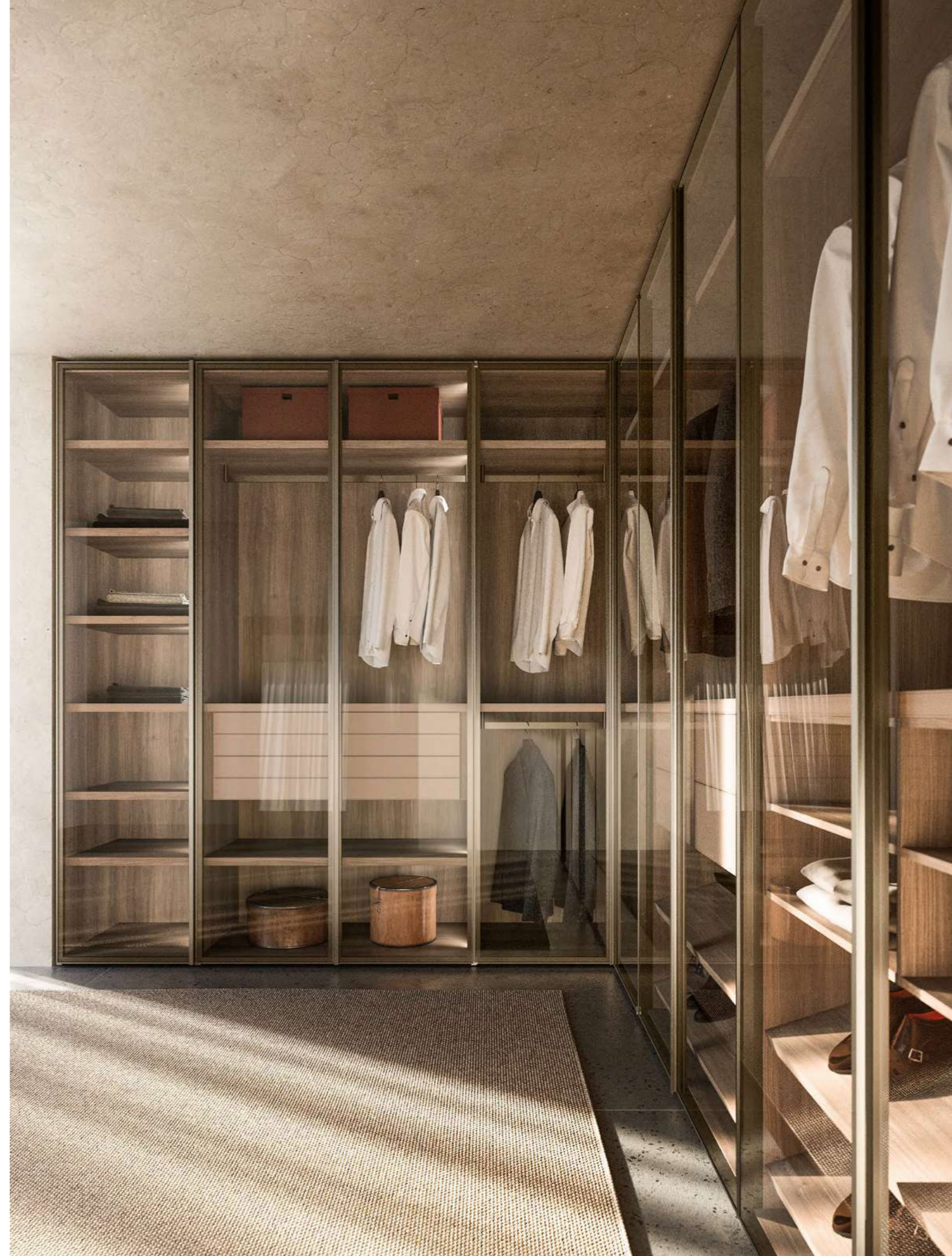
DESIGN: PIERO LISSONI + CRS BOFFI

YEAR: 2015

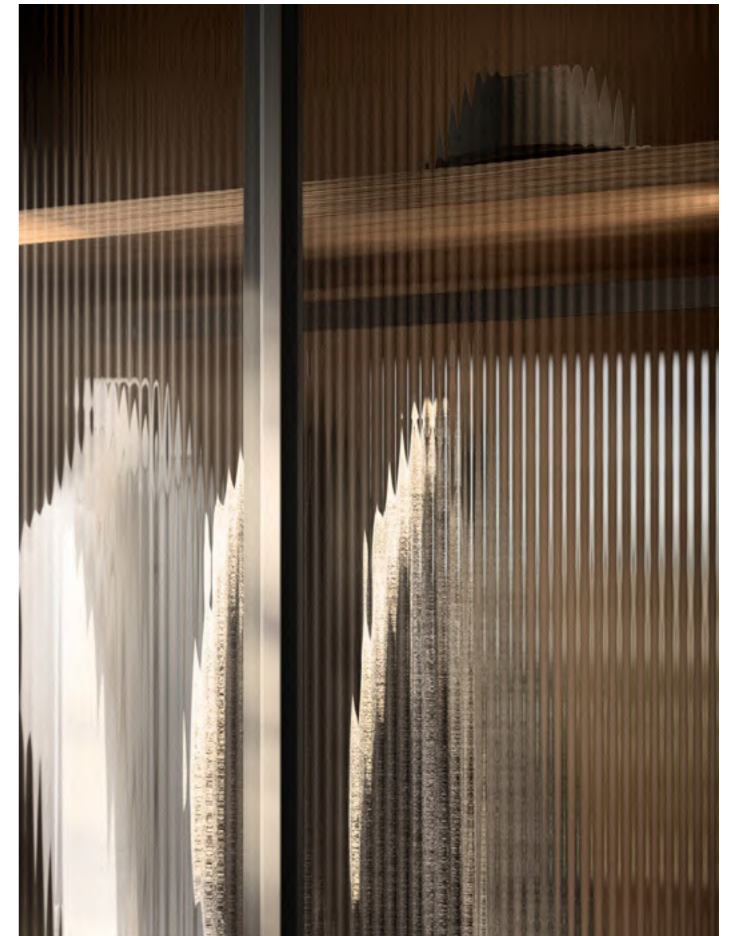


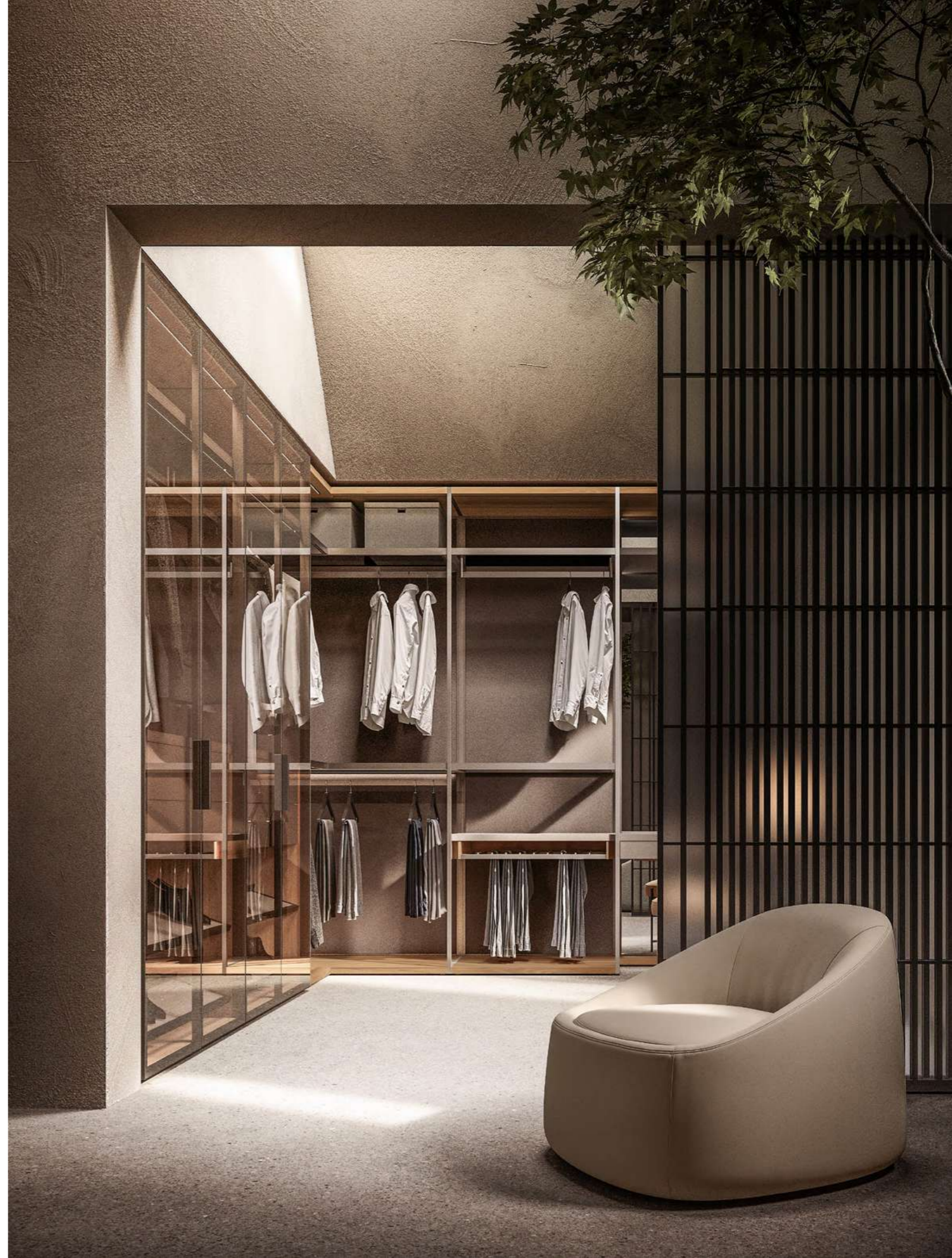
CREATE YOUR OWN SPACE

The wardrobe and walk-in closet are set up to accommodate accessories, a lockbox, hangers, modules, practical compositions, refined finishes, functions and integrated lighting. In short, everything needed to suit both large and small spaces. The system allows maximum flexibility depending on one's needs. The elements can be also blended by placing the Antibes wardrobe with doors alongside a door-free Antibes walk-in closet with side panels.





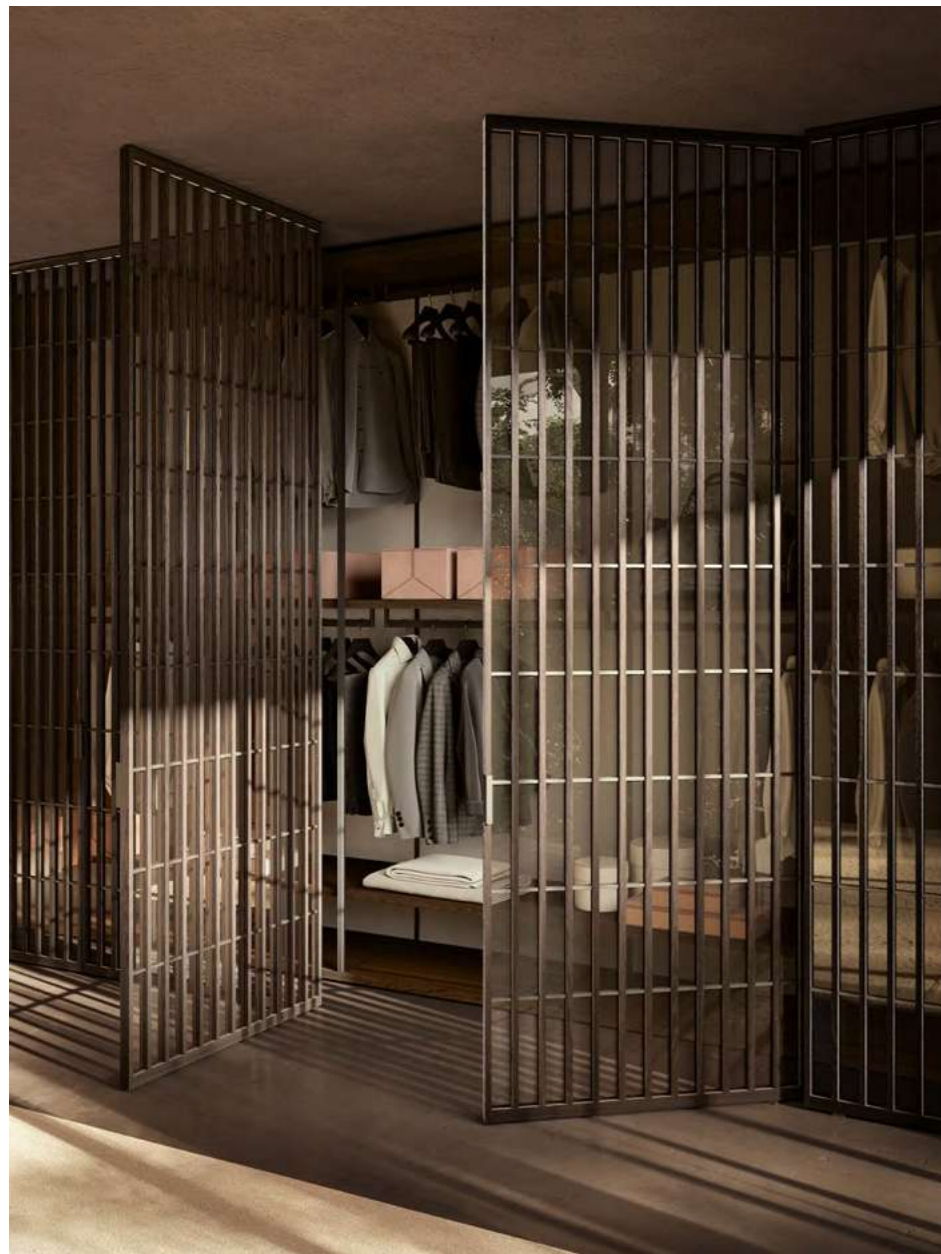






WATER INNER



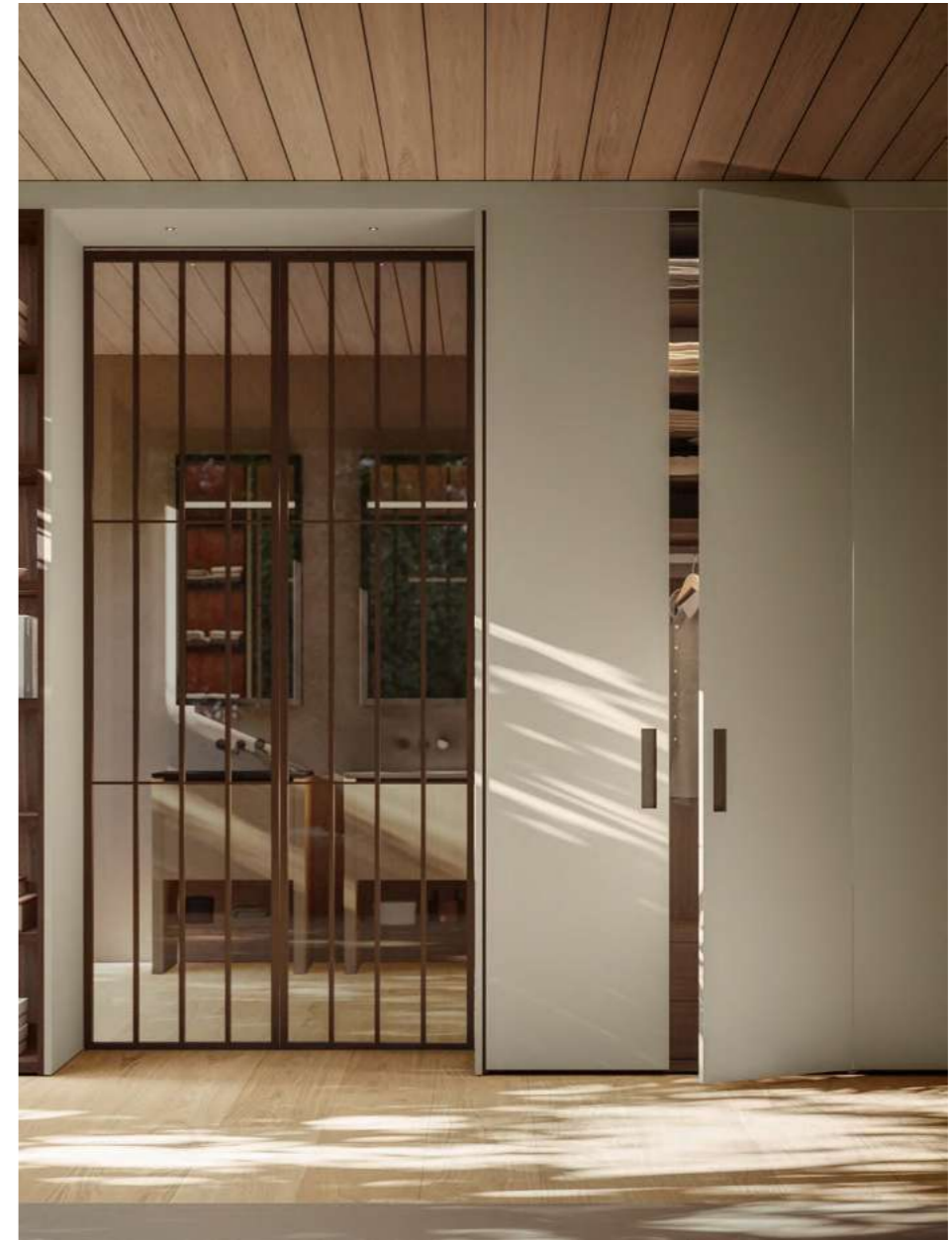








WATER INNER

















WATER INNER

Inspired by Architecture:
ANTIBES SYSTEM

SYSTEM

DESIGN: PIERO LISSONI + CRS BOFFI

YEAR: 2019





INSPIRED BY ARCHITECTURE

The flexibility of the Antibes living system allows you to create a floor-to-ceiling setup where the structure must be affixed to the ceiling. The wooden framework can be accessorised with a TV stand in various heights, a desk, containers with drawers or flap doors and the option of integrating ADL glass. The LED strip lighting and contrasting lacquered elements create an interplay of colour and movement to underline the elegant, architectural profile.











WATER INNER





WATER INNER



Understated Versatility:
BROMPTON

SYSTEM

DESIGN: PIERO LISSONI

YEAR: 2012



UNDERSTATED VERSATILITY

The common feature shared by Boffi systems is the ability to configure furniture to fit one's needs. The Brompton shelving system with its storage containers does not overlook this fundamental detail. Whether wall mounted or set up as an island, the support structure in matt black anodised aluminium comes with shelves and containers suitable for any space in the home, from the living area to the bedroom and bathroom.



Products Overview



8

B14 by Norbert Wengen, doors and top in Italia grey marble. – PIETRA washbasins in Italia grey marble. – ELEMENTI mirrors by Elisa Ossino. – PIPE washbasin taps by Marcel Wanders, Boffi Fantini Aboutwater, in Matt Gun Metal PVD.



12

B15 monobloc units by Norbert Wengen, doors in polyester white, top in white Carrara marble. – ELEMENTI mirrors by Elisa Ossino. – TWIG small table by Keiji Takeuchi. – ECLIPSE washbasin taps by Studiocharlie, Boffi Fantini Aboutwater, in satin stainless steel.



16

CASE 5.0 BATH by Piero Lissoni, doors in Ecolak Arctic white, top in Grey Stone marble and protruding top in smoked oak veneer wood. – FISHER ISLAND XL STONE washbasins by Piero Lissoni in Grey Stone marble. – VENEZIANA mirrors by Piero Lissoni. – GIÒ lamp by CRS Boffi. – ROUND SABBIA STONE bathtub by Naoto Fukasawa in Grey Stone marble. – TWIG bathtub shelf by Keiji Takeuchi. – GARDEN washbasin taps, bathtub spout and shower taps by Piero Lissoni, Boffi Fantini Aboutwater, in Matt Gun Metal PVD.



39

FLYER floating top by CRS Boffi in old grey pinewood. – FLYER unit by CRS Boffi in Silcolak hay. – LOTUS STONE washbasin by Naoto Fukasawa in white Carrara marble. – LOTUS mirror by Naoto Fukasawa. – BOCCIA lamp by Piero Lissoni. – FISHER ISLAND bathtub by Piero Lissoni + CRS Boffi in white Cristalplant® and Soft Touch grey. – ECLIPSE washbasin taps and bathtub spout by Studiocharlie, Boffi Fantini Aboutwater, in Matt Gun Metal PVD.



42

FREE ZONE by CRS Boffi, doors in Smoked dyed oak wood-Freehand, top and sides in white Carrara marble. – ROUND SABBIA STONE washbasins by Naoto Fukasawa in white Carrara marble. – LOTUS mirror by Naoto Fukasawa. – FLYER floating top by CRS Boffi in white Carrara marble. – UPPER storage units by Piero Lissoni + CRS Boffi in smoked oak. – ROUND SABBIA STONE bathtub by Naoto Fukasawa in white Carrara marble. – GARDEN washbasin taps and bathtub spout by Piero Lissoni, Boffi Fantini Aboutwater, in Matt Gun Metal PVD.



46

FREE ZONE by CRS Boffi, doors in American elm wood-Shades, top and sides in MDI Devon. – PIETRA washbasin in MDI Devon. – UPPER storage units by Piero Lissoni + CRS Boffi in black Paperstone®. – L.O.P. lamps by CRS Boffi – SOLSTICE mirror by Piero Lissoni. – SWIM C bathtub by Piero Lissoni in white Cristalplant® with open compartments in American elm veneer wood. – GARDEN washbasin taps and bathtub spout by Piero Lissoni, Boffi Fantini Aboutwater, in Matt Gun Metal PVD.



24

CASE 5.0 BATH by Piero Lissoni, doors in Polyester deep grey, top in white Carrara marble and protruding top in smoked oak veneer wood. – FISHER ISLAND XL STONE washbasins by Piero Lissoni in white Carrara marble. – WK6 OUTLINE mirror by Piero Lissoni, frame in smoked oak veneer wood. – FISHER ISLAND STONE bathtub by Piero Lissoni + CRS Boffi in white Carrara marble. – GARDEN washbasin taps and bathtub spout by Piero Lissoni, Boffi Fantini Aboutwater, in Matt Gun Metal PVD.



30

FLYER units by CRS Boffi in Silcolak Luton grey. – FISHER ISLAND STONE washbasins by Piero Lissoni in Verde Alpi marble. – LOTUS mirrors by Naoto Fukasawa. – ECLIPSE washbasin taps by Studiocharlie, Boffi Fantini Aboutwater, in satin stainless Steel.



36

FLYER units by CRS Boffi in American elm veneer wood. – ICELAND washbasins by Piero Lissoni in white Cristalplant®. – SOLSTICE mirror by Piero Lissoni. – GIÒ lamp by CRS Boffi. – PIPE washbasin taps and shower by Marcel Wanders, Boffi Fantini Aboutwater, in satin stainless steel and red lacquering.



52

I FIUMI by Claudio Silvestrin, in Smoked dyed solid oak. – PIAVE washbasins by Claudio Silvestrin in Emperador Dark marble. – I FIUMI mirror by Claudio Silvestrin in Clay Hydra. – ECLIPSE washbasin taps by Studiocharlie, Boffi Fantini Aboutwater, in Matt Gun Metal PVD.



58

I FIUMI by Claudio Silvestrin in Grey polyester. – RUBICONE washbasins by Claudio Silvestrin in Grey Stone marble. – LOTUS mirror by Naoto Fukasawa. – IKO towel holder by Kensaku Oshiro. – ECLIPSE washbasin taps by Studiocharlie, Boffi Fantini Aboutwater, in Matt Gun Metal PVD.



62

I FIUMI ST by Claudio Silvestrin, doors in Canaletto walnut, top in Grey Stone marble. – ICELAND STONE washbasins by Piero Lissoni in Grey Stone marble. – SOLSTICE mirror by Piero Lissoni. – GIÒ lamp by CRS Boffi – ICELAND bathtub by Piero Lissoni in white Cristalplant®. – TWIG bathtub shelf and low table by Keiji Takeuchi – GARDEN washbasin taps and bathtub spout by Piero Lissoni, Boffi Fantini Aboutwater, in Matt Gun Metal PVD.



70

L18 double washbasin by Norbert Wengen in Rosso Lepanto marble. – FLYER unit by CRS Boffi in smoked oak veneer wood. – LOTUS mirror by Naoto Fukasawa. – GIO PRO lamp by CRS Boffi Metals lead. – ROUND FISHER bathtub by Piero Lissoni in white Corian®. – PIPE washbasin taps and bathtub spout by Marcel Wanders, Boffi Fantini Aboutwater, in Matt Gun Metal PVD.



74

LAPIS washbasins with column by Piero Lissoni in green onyx and pink onyx with brass basin. – ZONE wall units with mirror by Piero Lissoni. – ECLIPSE washbasin taps by Studiocharlie, Boffi Fantini Aboutwater, in Matt Gun Metal PVD.



78

PH STONE washbasin with column by Piero Lissoni in white Carrara marble. – BOCCIA lamp by Piero Lissoni. – ECLIPSE washbasin tap by Studiocharlie, Boffi Fantini Aboutwater, in Matt Gun Metal PVD.



94

R.I.G. BATHROOM by Mikal Harrsen, doors and top in Grey Stone marble. – RD2 STONE washbasins by Mikal Harrsen in Grey Stone marble. – LOTUS mirror by Naoto Fukasawa. – ECLIPSE washbasin taps by Studiocharlie, Boffi Fantini Aboutwater, in satin stainless steel.



98

R.I.G. BATHROOM by Mikal Harrsen, doors and top in MDI Surrey. – R.I.G. STONE washbasins by Mikal Harrsen in MDI Surrey. – GIO lamp by CRS Boffi. – FAROE bathtub by Piero Lissoni in white Cristalplant®. – TWIG bathtub shelf by Keiji Takeuchi. – GARDEN washbasin taps and bathtub spout by Piero Lissoni, Boffi Fantini Aboutwater, in Matt Gun Metal PVD.



102

ROUND SABBIA STONE washbasin with column by Naoto Fukasawa in Verde Alpi marble. – SOLSTICE mirror by Piero Lissoni. – CT LINE units by Victor Vasilev in De Castelli DeLabré brass F2. – GARDEN washbasin tap by Piero Lissoni, Boffi Fantini Aboutwater, in Matt Gun Metal PVD.



82

PHC washbasins with column by Piero Lissoni in white Corian® and Soft Touch grey. – R.I.G. MIRROR self-bearing mirror by Mikal Harrsen. – ECLIPSE washbasin taps by Studiocharlie, Boffi Fantini Aboutwater, in Matt Gun Metal PVD.



86

QUADTWO monobloc unit by Jeffrey Bennett, doors in Silcolak white and top in white Cristalplant®. – LEDLINE mirror by CRS Boffi. – PIPE washbasin tap by Marcel Wanders, Boffi Fantini Aboutwater, in Matt Gun Metal PVD.



90

R.I.G. BATHROOM by Mikal Harrsen, doors and top in MDI York. – R.I.G. STONE washbasin by Mikal Harrsen in MDI York. – R.I.G. MIRROR by Mikal Harrsen. – FISHER ISLAND bathtub by Piero Lissoni + CRS Boffi in white Cristalplant®. – SP14 mirror by neunzig°design. – SHORTCUT towel holder by Nendo. – ECLIPSE washbasin taps and bathtub spout by Studiocharlie, Boffi Fantini Aboutwater, in Matt Gun Metal PVD.



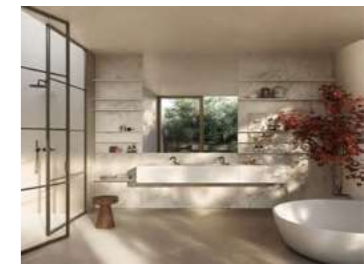
106

SABBIA STONE washbasins with column by Naoto Fukasawa in Grey Stone marble. – SABBIA STONE bathtub by Naoto Fukasawa in Grey Stone marble. – ECLIPSE washbasin taps and bathtub spout by Studiocharlie, Boffi Fantini Aboutwater, in Matt Gun Metal PVD.



116

SIMPLE by Piero Lissoni + CRS Boffi in Easy Metals Iron Luxury. – SIDEL STONE washbasins by Piero Lissoni in white Carrara marble. – WK6 mirror by Piero Lissoni. – FAROE bathtub by Piero Lissoni in white Cristalplant® and Soft Touch grey. – CT LINE units by Victor Vasilev in O_Steel. – TAPE shower tray and shower box by Monica Armani. – PIPE washbasin taps, bathtub spout and shower taps by Marcel Wanders, Boffi Fantini Aboutwater, in satin stainless steel and red lacquering. – PIPE clothes hook by Marcel Wanders, Boffi Fantini Aboutwater, in satin stainless steel and red lacquering.



120

UPPER BOISERIE by Piero Lissoni + CRS Boffi, doors in Ecolak Arctic white and top in Superwhite marble, shelves in Ecolak Arctic white and back panels in Superwhite marble. – ROUND FISHER bathtub by Piero Lissoni in white Corian®. – GARDEN washbasin taps and shower taps by Piero Lissoni, Boffi Fantini Aboutwater, in Matt Gun Metal PVD.



128



132



144



158



162



164

UPPER UNITS by Piero Lissoni + CRS Boffi in U.S Canaletto walnut veneer wood. – FLOE STONE washbasin by Keiji Takeuchi in Emperor Dark marble. – UPPER storage units by Piero Lissoni + CRS Boffi in Ecolak basalt grey. – LOTUS mirror by Naoto Fukasawa. – ROUND SABBIA STONE bathtub by Naoto Fukasawa. – ECLIPSE washbasin taps and bathtub spout by Studiocharlie, Boffi Fantini Aboutwater, in Matt Gun Metal PVD.

WOOD-IN units by Piero Lissoni, doors in Canaletto walnut U.S, top in Emperor Dark marble. – GARDEN washbasins by Piero Lissoni in grey PVD with drain-hole covering shelf in Emperor Dark marble. – VENEZIANA mirror by Piero Lissoni. – GIÒ PRO lamp by CRS Boffi in Canaletto walnut U.S – FISHER ISLAND STONE bathtub by Piero Lissoni + CRS Boffi in Emperor Dark marble. – ECLIPSE washbasin taps and bathtub spout by Studiocharlie, Boffi Fantini Aboutwater, in Matt Gun Metal PVD.

ANTIBES wardrobe by Piero Lissoni, structure in melamine-coated elm, interior equipment in melamine-coated elm wood and dove grey microfibre, Handframe doors in transparent bronze glass with aluminium bronze finish frame. – ANTIBES freestanding drawer island unit by Piero Lissoni, Mirror glass.

ANTIBES wardrobe by Piero Lissoni, structure in smoked oak, aluminium bronze finish frame-sides. – OFFICINA 4x1 doors in transparent smoky bronze glass with aluminium bronze finish frame.

ANTIBES wardrobe by Piero Lissoni, structure in smoked oak, doors in Silcolak Paros white. – JAPO J1 doors in transparent smoky bronze glass with aluminium bronze finish frame.

ANTIBES walk-in closet by Piero Lissoni, structure and interior equipment in melamine-coated thermo-treated larch, Extralight black anodised aluminium frame and back panel in Extralight glass. – FOREST door in black anodised aluminium.



148



153



156



175



178



182

ANTIBES wardrobe by Piero Lissoni, structure in melamine-coated thermo-treated larch, interior equipment in melamine-coated thermo-treated larch and bonded leather, Handframe doors in Metropolitan glass with black anodised aluminium frame.

ANTIBES wardrobe by Piero Lissoni, structure in melamine-coated elm, interior equipment in melamine-coated elm and Agata leather, Frame+ doors in transparent glass with aluminium bronze finish frame.

ANTIBES wardrobe by Piero Lissoni, structure in smoked oak, black anodised aluminium frame-sides. – JAPO J3 doors in transparent glass with smoked oak frame.

ANTIBES walk-in closet by Piero Lissoni, structure and interior equipment in melamine-coated thermo-treated larch, Frame+ doors in Extralight glass with aluminium bronze finish frame and back panel in Extralight glass. – MITICA door in transparent glass with black anodised aluminium frame.

ANTIBES SYSTEM open system by Piero Lissoni + CRS Boffi in smoked oak, desk compartment elements and dividers in high-gloss lacquered Petra red GL, PLM doors in transparent glass with black anodised aluminium frame and back panel in Extralight glass.

ANTIBES SYSTEM open system by Piero Lissoni + CRS Boffi in smoked veneer wood, drawers and dividers in high-gloss lacquered Caligo green GL, PLM doors in Metropolitan glass with black anodised aluminium frame.



186

ANTIBES SYSTEM *open system* by Piero Lissoni + CRS Boffi in smoked veneer wood, TV compartment elements and dividers in high-gloss lacquered grey GL, PLM doors in transparent glass with black anodised aluminium frame.



190

BROMPTON *shelving system* by Piero Lissoni in black anodised aluminium.



AWARDS

Every award Boffi has won in the fields of design and sustainability is proof of its commitment to rigorous research, experimentation and creative innovation. We are proud and grateful for the achievements earned in these 90 years of business.

1995	BOFFI	ADI Compasso d'Oro Career Award
2003	CASE SYSTEM by Piero Lissoni, kitchen	Red Dot Award for best product design
2004	CUT by Mario Tessarollo and Tiberio Cerato, taps	ADI Compasso d'Oro Career Awards selection Red Dot Award for best product design
2007	TABLE SYSTEM by Piero Lissoni, kitchen	Chicago Atheneum Good Design Award
2008	+/- DROR, cabinets	Chicago Atheneum Good Design Award
2011	APRILE by Piero Lissoni, kitchen	EDIDA (Elle Decoration International Design Award)
2012	K20 by Norbert Wangen, kitchen	Chicago Atheneum Good Design Award
	CTLINE by Victor Vasilev, tall units	Chicago Atheneum Good Design Award
2014	K20 by Norbert Wangen, kitchen	ADI Compasso d'Oro honourable mention
2015	SALINAS by Patricia Urquiola, kitchen	Wallpaper* Design Award and EDIDA (Elle Decoration International Design Award) for best kitchen
2016	SALINAS by Patricia Urquiola, kitchen	ADI Compasso d'Oro honourable mention
2018	ECLIPSE by Studiocharlie, taps	ADI Compasso d'Oro Award
	COMBINE by Piero Lissoni + CRS Boffi, kitchen	Archiproducts Design Award in kitchen category
	Aboutwater (Boffi + Fantini) AA/27 by M. Anastasiades, taps	Archiproducts Design Award in bathroom category
	COVE KITCHEN by Zaha Hadid	EDIDA (Elle Decoration International Design Award) in the kitchen category
2019	K6+6 by Norbert Wangen, kitchen	Archiproducts Design Award in kitchen category
	ANTIBES SYSTEM by Piero Lissoni, storage system	Archiproducts Design Award in furniture category
	R.I.G. BATHROOM by Mikal Harrsen, bathroom	Archiproducts Design Award in bathroom category
2020	R.I.G. BATHROOM by Mikal Harrsen, bathroom	ADI Compasso d'Oro honourable mention
	Aboutwater (Boffi + Fantini) AK/25 by Paik Sum Kim, taps	ADI Compasso d'Oro Award
2021	COMBINE by Piero Lissoni + CRS Boffi, kitchen	Archiproducts Design Award in kitchen category
	ANTIBES SYSTEM by Piero Lissoni, storage system	Archiproducts Design Award in furniture category
2022	CASE 5.0 – BECOMING by Piero Lissoni	Archiproducts Sustainability Award
	MINIKITCHEN BY JOE COLOMBO	ADI Compasso d'Oro Career Award
	COMBINE EVOLUTION BY PIERO LISSONI	ADI Compasso d'Oro honourable mention
2023	ANTIBES SYSTEM by Piero Lissoni	Archiproducts Design Award

COLOPHON

WATER INNER

Creative Direction
Boffi | DePadova

CATALOGUE

Creative Direction
Davies Costacurta

Graphic Design
Studio Costacurta

Styling
Greta Cevenini
Leandro Favalaro

Set design and rendering
Nudesign

Post production and color separation
Nudesign

Company Profile Pictures
Anna Rosa Gavazzi

Printed in Italy
Nava Press, 2024

Special thanks to
De Castelli
Domenico Mori
Inalco
Mosaicomicro e Nerosicilia, Framo Mosaici Srl

Each Boffi product is made in Italy in accordance with ISO 9001:2015 regulations. The ISO 14001:2015 standards ensure the environmental impact at every stage of production. The quality and environmental policies provide continuous improvement actions that involve the entire organization. Boffi products are guaranteed for 3 years, as of the date of the guarantee certificate issue.

Some products shown in this catalogue may not be in the Boffi product listing. Modifications and improvements to products could vary from the solutions presented.



Boffi means experimentation and high-end manufacturing that is in constant evolution. It is a vigorous search for beauty and functionality. It looks to create a distinct *way of living*.